

CHICAGO

ISSUES:

- Gun violence
- Bullying
- Cyberbullying
- Racism
- Discrimination in healthcare
- Hunger
- Homelessness
- Lack of education
- Violence
- Crime
- Murder

Issues Oppor- & tunities.

Opportunities:

- Sustainable Agriculture
- End Homelessness plans
- Sustainable energy
- Affordable energy
- Job opportunities
- Affordable housing
- Shops and shopping centers
- Places of religious worship
- Business places and headquarters

GROWTH.

The reason why Chicago has grown so fast is because of the portland it was built on. This land was the right place for trading opportunities.

Some pull factors are:

- The mississippi river
- manufacturing business
- Growth of businesses
- Trade of goods and materials.



Chicago is located in the state of Illinois. This is in the north east of america.



This magcity is both a beautiful and busy place. It has lots of agriculture, wildlife and natural places. There is also a multitude of man made skyscrapers, busy roads and railways. It is a balance of both nature and industrial features. Although there is lots of beauty in this

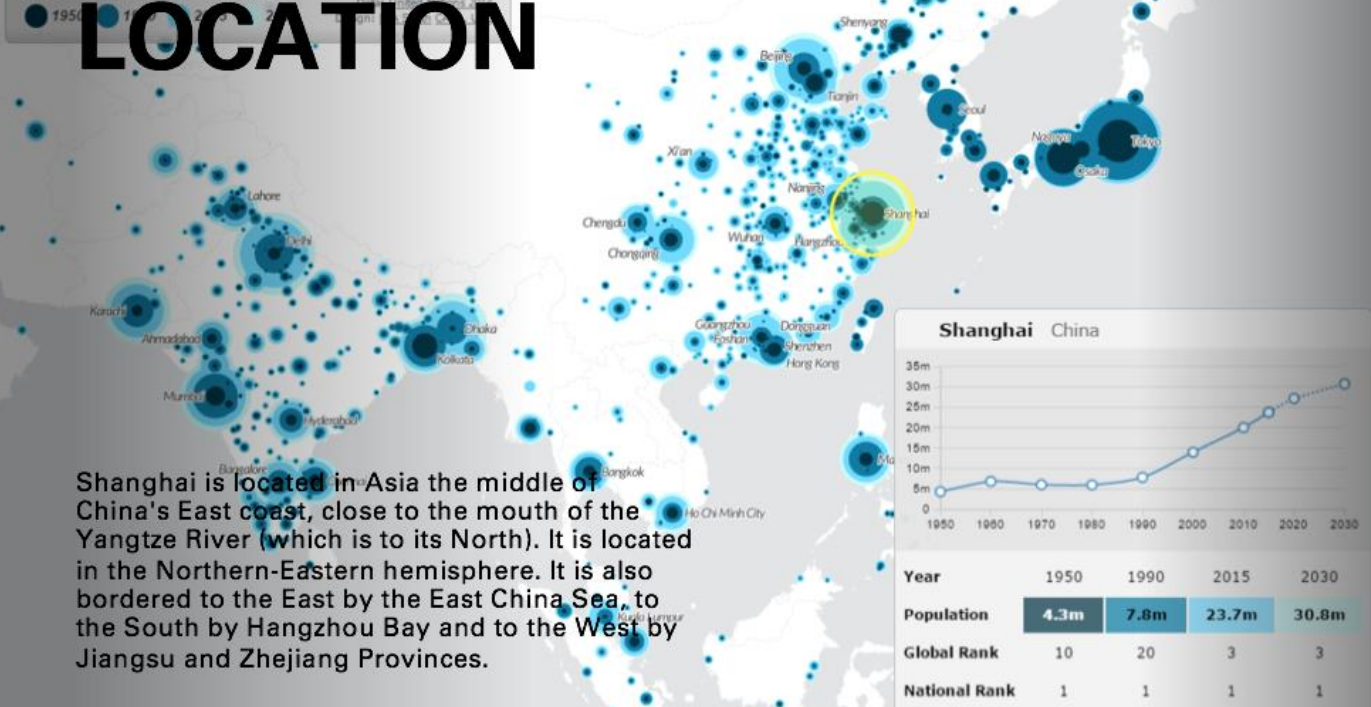
sense of Place:



World City Populations 1950 - 2030

Circle areas proportional to populations in 1950, 1970, 1990, 2010, and 2030.

LOCATION



Shanghai is located in Asia the middle of China's East coast, close to the mouth of the Yangtze River (which is to its North). It is located in the Northern-Eastern hemisphere. It is also bordered to the East by the East China Sea, to the South by Hangzhou Bay and to the West by Jiangsu and Zhejiang Provinces.

William Casey 8L

Harriet Jones 8F

Ben Fraser 8G

Beijing

Beijing is located in the North of China. It borders Bohai sea 70 miles to the west, Beijing also borders Hebei province to the North, West and South and Tianjin to the Southeast. It is regarded as the political, educational and cultural center of China as well as being the capital city. Beijing is also near the meeting point of the Yanshan and Xishan mountain ranges.



another city that borders Beijing, Tianjin



Beijing

Beijing is one of the oldest cities in the world and is home to a lot of historical sites such as the Great Wall and the Forbidden City. The longest river in Asia the Yangtze river which is 3915 miles long is in Beijing! It is 61% mountainous and home to quite a lot of mountains including Lingshan mountain with a peak of 2,303 meters and Haituo with a peak of 2,241 meters. Beijing has a wealth of tradition culture like Beijing opera, Chinese painting as well as centuries-old Chinese features like Chinese silk, ceramics and Chinese tea. Beijing consists of lots of high rise buildings and expensive sky scrapers. It consists of many iconic trademarks such as the Great Wall of China, Summer Palace and the Forbidden City making it a popular tourist destination. The immense growth of urban Chinese cities increases the need of vehicles and energy this speeds up the burning of fossil fuels resulting in smog. Beijing was ranked 122 among the most polluted cities.

high rise buildings and sky scrapers in Beijing



Yangtze river - the longest river in Asia!



Great Wall of China



Forbidden City

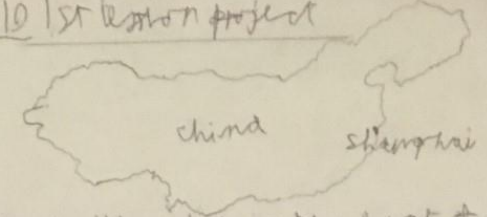
The cities population grew rapidly in the early 1980s as China greatly expanded and Beijing became a magnet for labour. Most of the migrants were farmers from China's rural hinterland. People are also attracted to Beijing because of its rapid economic development so migration that fast leads to overpopulation. Beijing is considered a very developed city as 73.2% of its GDP is from tertiary industry which is very appealing to those who live in rural China which is why rural-urban migration occurs.

Lesson 10 1st lesson project

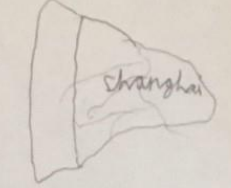
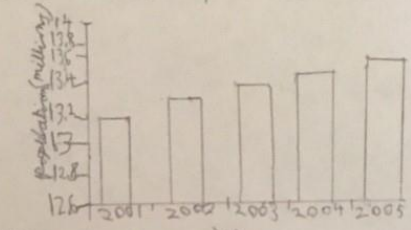
Task 1:

Shanghai

Task 2:

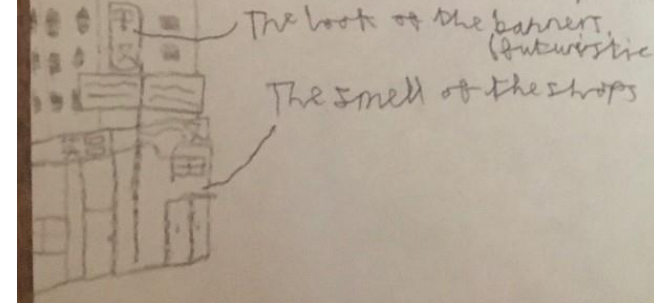


Shanghai (shang-hai) located on the east of China and southern of Asia. It is by the sea and is on the edge of China. It has had a population of 24.28 million by 2019. It is one of the busiest cities in the world and is circled by a river with boats surround the city.



Task 3:

Sound = It would be loud but also.
Taste = It tastes cuisine and tea.
Feel = It would feel calm and friendly at Shanghai.
Look = It looks futuristic because of all the money that was put into it.
Smell = It smells of sweet, spicy and sour smell because of all the shops nearby.




The look of the banner, futuristic
The smell of the shops

Maddie Welch 8D

LOCATION

New York is in the country of the United States, which is in the northern hemisphere in the continent of North America. New York City is located on the coast of the North eastern United States at the mouth of the Hudson River in south eastern New York state.



CHALLENGES

- air pollution from lots of cars and transport
- strain on resources
- crime and murder
- very expensive place to live
- pressure on services due to large population and high demand
- lack of representation by government (as there are more people per government representative than in rural areas)
- lots of poverty due to vehicles etc, this could damage health
- rapid rural-urban migration means a rapidly growing population in the city
- the political system is different
- healthcare isn't free
- the laws are different
- possibly not as safe
- lots of congestion because of traffic
- hard to navigate through such a busy place
- not good for people with disabilities

OPPORTUNITY

- Higher paying jobs in the tertiary sector (services) and in the secondary sector (manufacturing)
- cheaper & more efficient transport
- more investment from the government and other businesses therefore better services (e.g. education, good healthcare)
- very good entertainment
- cultural and historic sites
- vibrant economic centres
- globally important
- better and more efficient services and facilities
- Reliable water source
- Easily accessible transport
- Work may be near to where you live
- Easy to commute
- Good education

SENSE OF PLACE

modern high-rise buildings for high-tech industry
Density populated
Very busy
Rich
"Dense is money"
Lot of cars - big population, lots of commuters and possibly high-tech
Very loud "humming" markets
Many vehicles - causes pollution
Bustling street life

NEW YORK CITY

WHY IS GROWTH SO RAPID?

Industrial Revolution
Industrial increase is the difference between the number of births and deaths in a population. At the industrial revolution, the birth rate and the death rate, this is a key factor for why New York City is so large.

Older London
UNICEF estimates that approximately 10 million children are currently working, primarily in countries that have low child labour laws. This rate is high in children being sent to work, some of them by impoverished families. Furthermore, with child labour, work is dangerous, and some opportunities they should be given, particularly when it comes to child labour. However, this rate may not be as high in a developed country like New York City.

Reduced Mortality Rates
Improvement in medical technology has led to lower mortality rates for many various diseases. Particularly dangerous diseases and deaths such as cholera, malaria and measles have been drastically eliminated by such advances. While this is a positive news in many ways, it also means that people are living longer than ever before. The "baby" in the world today (and death) has led to birth rates which are growing at a faster rate than ever before. This is particularly a problem in New York City, as the developed, therefore technology, comes often.

Rural to urban migration
Rural-urban migration is the movement of people from the countryside to the city. The reasons for this migration is, however, a variety of reasons and often are regarding seeking a greater level of social interaction - an increasing proportion of people living in towns and cities. This is one of the factors that has made New York City a megacity.

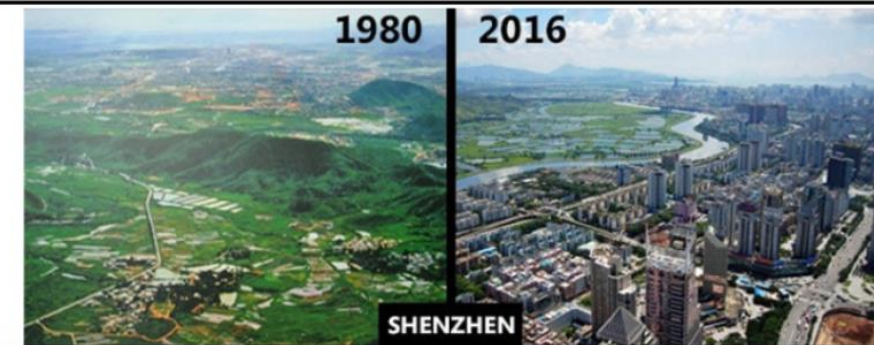
Push factors
Poverty is believed to be the leading cause of migration. A lack of educational resources, coupled with high birth rates, leading to higher birth rates, lead to an increasing birth rate, which leads to a growing population.

Year	Population	% Increase
1800	3,437,303	+12.8%
1910	4,766,863	+38.7%
1920	6,230,048	+31.7%
1930	6,530,446	+23.3%
1940	7,454,995	+7.6%
1950	7,891,957	+5.9%
1960	7,761,594	+1.8%
1970	7,994,862	+3.1%
1980	7,071,639	-10.4%
1990	7,322,364	+3.5%
2000	8,006,288	+9.4%
2010	8,175,133	+2.1%
2019	8,334,617	+2.0%

How Did It Get To Be This Big?

Shenzhen started off as a rural village that smelled of the countryside. One of the reasons that it is so developed today; economically and socially is that it is the heart of the global tech industry. It has also had to add more buildings to the city due to natural increase.

As it is a very modern area nowadays with hygienic places and very developed technology, this is a huge pull factor to the inhabitants and tourists.



Pg4

Luca Baroni 8E

Beth Smith 8E

Sense of place

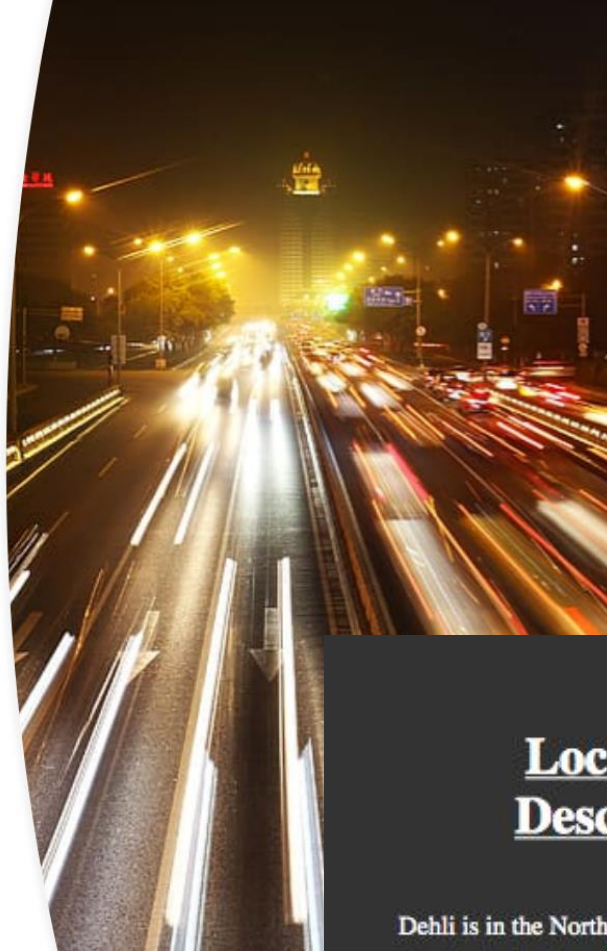
Beijing is very busy

You might be quite intimidated going there because there are so many people living there

I think that because there are so many people living there it would be quite noisy

There are lots of places to visit and things to see as well as lots of buildings for accommodation

I think that you may be able to smell some food



Alex Collie 8G

Locational Description

Dehli is in the North of India, Asia.
It is in the Southern hemisphere.

Sense of place

Many modes of transportation causing pollution
Densely populated
Opportunities for work



Dehli is here



Lewis Ridge 8C

Sense of Place: LA is the most popular city in California and is vastly populated containing 3.99million people. Its centre contains urban landscapes and many large buildings, apartments and shops. However, it is surrounded by vast mountain ranges, valleys, forests, beautiful beaches along the Pacific Ocean, and nearby desert. The streets are filled with hardworking people dreaming of fame and success. New housing is built very often as the population grows and the urban areas are filled with modern landscaping. All housing in LA has fresh running water and good facilities. The streets are constantly filled with hustle and bustle whether it is a day or night.



Large mountains surrounding LA. Rural

Large modern skyscrapers towering over the city. Urban

Motorway, lots of noise, disturbance and many cars and trucks.

Little greenery around housing.

Vastly populated area. Lots of housing enclosed together.

Challenges and Opportunity:

Opportunity

- Urban areas
- Cafes and shops
- nation's largest manufacturing base
- Parks
- Facilities (Hospital, School)
- Jobs
- A lot of career paths to take
- The centre of the American movie industry – Hollywood
- Electricity and running water supply
- fast-growing and immense high-tech industry

Key:

- Economic
- Social
- Environmental
- Best opportunities
- Worst Challenges

Challenges

- Noisy
- Corruption can be a small problem.
- Crowded
- Pollution
- Earthquakes
- Expensive living
- Crime

What are the opportunities of living in Shanghai?

+ PRO: Variety and convenience

Shanghai is mostly dominated by apartment-style housing, but there are also numerous villa compounds.

+ PRO: Variety of activities

From art shows to music festivals, there will always be some sort of event going on in Shanghai.

+ PRO: Transportation

It's extremely easy to get around the city. With multiple subway lines, a plethora of bus routes, and a never-ending stream of taxis.

+ PRO: Little to no crime

Shanghai is a place with low levels of crime, and expats will rarely hear of any major crimes being committed.

+ PRO: High-quality private healthcare

In Shanghai, the better insurance one has, the better service and benefits they will receive.

Evan Harte 8K

Anneika Zaheer Sheikh 8F