



# PROSPECTUS 2021-2023



*“Students make **OUTSTANDING** progress.”* (ALPS, 2020)

## Highdown School Sixth Form

# Highdown Sixth Form in brief

**Student progress is in the top 5% nationally**



Facilities including study centre, library, Café 6 and more!

*"Highdown provides a great learning environment, where I can achieve my best"*

**Highly qualified, dedicated and experienced staff**



A personal mentor to support your transition to and from Sixth Form



A study programme that matches your ability and aspirations

A range of enrichment and leadership opportunities are provided

*"The teachers are willing to go the extra mile"*



**An extensive UCAS programme**



**30 subjects on offer . . .**



# Contents

Welcome to Highdown Sixth Form	2	Further Mathematics	22
Foreword from Student Leaders	3	Geography	23
Academic and Personal Development	4	History	24
How We Support You	5	Information Technology (Level 2)	25
Admissions: Study Programmes	6	Information Technology (Level 3)	26
Subject Eligibility Criteria	7	Mathematics	27
Applying to Join our Sixth Form	8	Mathematical Studies (AS Level)	28
Art and Design (Fine Art)	9	Music	29
Art Fashion (Textile Design)	10	Music Technology	30
Art Photography	11	Performing Arts (Level 3)	31
Biology	12	Physics	32
Business Studies	13	Politics	33
Business and Enterprise Studies (Level 2)	14	Psychology (Applied – Level 3)	34
Chemistry	15	Psychology	35
Chinese Mandarin	16	Religious Studies	36
Computer Science	17	Sociology	37
Economics	18	Spanish	38
English Language and Literature	19	Sport (Level 3)	39
English Literature	20	GCSEs: English, Mathematics	40
French	21	Destinations	41



# Welcome to Highdown Sixth Form

Thank you for your interest in Highdown School Sixth Form. Whether you are already a Highdown student in Year 11 or a student from another local or international school, you will be assured of personal attention to ensure we match the best curriculum offer to your skills and ambitions.

Sixth Form is an exciting time for 16-19 year olds. At Highdown we will do all we can to make sure that you develop the confidence, self-esteem, social awareness, skills and qualifications which will serve you well throughout your life. We respect everyone's individuality whilst working with you all to become effective team members and part of a cohesive Sixth Form community.

Through your courses in the Sixth Form you will take increasing responsibility for your own learning. You will be supported in all you do by a great team led by the Head of Sixth Form together with your personal mentor and your subject teachers. Care and guidance underpin challenging, inspirational and engaging learning and teaching. Our students go to the best Universities and there is a comprehensive support package to prepare you for interviews and selection testing either for the world of work, apprenticeships or university. The superb guidance ensures that all leave Highdown School Sixth Form well placed for the world beyond.

Highdown School Sixth Form is large enough to offer an extensive range of vocational and more traditionally academic courses. We ensure that there is good progression from our pre-16 curriculum. Level 2 courses in the Sixth Form support students who may need to gain qualifications in Mathematics or English as well as BTECs. These courses then progress to Level 3 for the majority of students who are successful on this route.

Highdown School and Sixth Form Centre is a very special place. The Sixth Form is a vibrant and exciting place in which to study, develop and mature. The outstanding opportunities for personal growth are second to none here. Our sixth formers are fantastic young people who go beyond Highdown able to meet the challenges of life with confidence.

**R E Cave**  
*Headteacher*

**K Prior**  
*Head of Sixth Form*

## WHY HIGHDOWN SIXTH FORM?

*You can expect from us:*

- A study programme that matches your ability and aspirations
- High quality teaching
- Very strong academic results
- A wide choice and combination of courses available
- A friendly and supportive environment with a personal tutor tracking your progress and mentoring you and supporting your transition to Sixth Form
- A range of enrichment and enhancement opportunities outside the academic curriculum to develop your personal, social and employability skills
- A caring and friendly Sixth Form community
- A successful Oxbridge preparation programme
- An extensive UCAS programme
- Full guidance system for careers and Higher Education
- Dedicated study space with excellent ICT facilities
- Fully qualified, caring and supportive staff
- Application support for Bursary Fund

## WHAT DO WE EXPECT OF YOU?

*You must commit to:*

- Work hard in order to maximise your successes
- Collaborate with teachers, each other and take responsibility for your own learning
- Develop as a person, taking advantage of the leadership opportunities offered
- Make positive contributions to the sixth form, academy and the wider community
- Have full attendance every day
- Behave and dress in an appropriate way and serve as a positive role model for younger students

# Foreword from Student Leaders



I have been at Highdown since year 7 and have always enjoyed my time here. Staff were always supportive and helpful, so I didn't consider leaving. However, starting year 12 was still daunting but since joining in September all my fears have quickly

faded as the support from teachers, mentors and Sixth Form staff was just as understanding and friendly as it had been lower down the school. The community at Highdown is unmatched, as the staff care as much about the emotional wellbeing of the students as their academic success. They make students feel supported and secure in their learning environment.

Although there is continuity from year 11 to Sixth Form there is also change in the level of independent study, helping encourage responsibility for your own learning and therefore increasing your maturity ready for further education or work. Along with the increase in independence the intensity of work does go up, but the subject teachers are always there to offer advice and help if the workload gets too much to handle. The Sixth Form team also ensures that students are taught effective study skills right from day one.

Being in a school Sixth Form has resulted in far more leadership opportunities being available, as the school house system creates a sense of school spirit and allows Sixth Formers to gain experience in a leadership role where they can develop skills useful for future careers. The student leadership team is one of many ways Highdown helps prepare you for careers, with a focus on soft skills needed for successful interviews and future work, UCAS advice and information on the courses best for you. Highdown makes sure you are ready for your next steps!

*Martha Crowland*



My time at Highdown's Sixth Form has been nothing but positive since the day I arrived and I am incredibly grateful I made the choice to move here. I did join Highdown Sixth Form as an external student and had multiple alternative options to choose from. After much consideration I found Highdown's facilities to be best for my next two years of education.

I was initially attracted to Highdown after being informed of its success in A Level results. This motivated me to attend the Open Evening where I was overwhelmed with all the positive comments the current Sixth Formers told me and the enthusiasm of every single teacher I met. It was this and the innovative art studio that finalised my enrolment.

The teachers have helped me settle in immensely, and helped with the transition to Sixth Form study. In mentor periods we talk a lot about the new levels of independence required, as well as information about university applications and other alternative options after A Levels.

After one month here I have become a House Captain and Head Student which was highly surprising to someone who had just joined. But this just proves how Highdown practises equality and appreciates all of their students' capabilities making sure they don't go unnoticed.

What also separates Highdown from other sixth forms and colleges are the extra-curricular activities presented to all students. As well as taking Art, Maths and Physics, I also take part in the Extended Project Qualification, which allows me to get an insight of what university entails as well as allowing me to research a topic totally unrelated to my chosen subjects.

Overall, choosing Highdown was the best decision I could have made and look forward to meeting you next year!

*Liana Lumunyasi*

## More than a qualification . . .

Our Sixth Form students have their own study centre and access to the library and The Gallery all day. Students have access to computers in the study centre and library. Wifi is available for students across the academy estate.

There is also access to a range of fantastic facilities – music rooms, drama studios, art studios, sport and fitness suites and the astro-turf. Sixth Form students also have their own outside space and access to Café 6 serving hot and cold food, and barista coffee!

The Sixth Form's location is easy to get to by public transport, road or on foot. We're a short walk from the nearest bus stop.





# Academic and Personal Development 2021

At Highdown Sixth Form we believe that we can offer you an enjoyable, interesting, challenging and successful time in Sixth Form. Sixth Form study offers you **new** courses, a **new** way of working and a wealth of **new** opportunities.

## ADVANCED LEVELS

Art and Design	Geography
Art Photography	History
Art Fashion (Textile Design)	Languages [Chinese Mandarin, French, Spanish]
Biology	Mathematics
Business Studies	Music
Chemistry	Music Technology
Computing	Physics
Economics	Politics
English Language and Literature	Psychology
English Literature	Sociology
Further Mathematics	

## EXTENDED PROJECT QUALIFICATION (EPQ)

### MATHEMATICAL STUDIES [2YR AS]

### TECHNICAL AND VOCATIONAL QUALIFICATIONS:

#### Level 3

Applied Psychology  
Drama and Theatre Studies  
ICT  
Sport

#### Level 2

Business and ICT

### GCSE ENGLISH LANGUAGE

### GCSE MATHEMATICS



## ENRICHMENT & ENHANCEMENT OPPORTUNITIES:\*

- 'Aim High' support sessions
- Student leadership
- Senior school productions
- Work experience
- University visits and seminars
- Curricular trips and visits
- Mock university admissions interviews
- Comprehensive PSHCE programme
- Peer mentoring programmes
- Weekly enrichment

(\*some of these opportunities may be remote due to Covid restrictions)

Here are some examples of study programmes followed by students in the past at Highdown School Sixth Form . . .

I achieved one grade 6, three grade 5s, three grade 4s and three grade 3s at GCSE. I studied a mix of vocational and academic subjects, and in Year 13 achieved:

- *BTEC Sport – Merit*
- *A-Level Sociology B*
- *A-Level Psychology C*

I am currently studying Physical Education at the University of Gloucestershire.

I achieved two grade 9s, two grade 8s, three grade 7s and three grade 6s at GCSE. I followed an academic study programme and in Year 13 achieved:

- *A-Level Psychology A*
- *A-Level Physics A*
- *A-Level Mathematics B*

I am currently studying Psychology at Southampton University.

I achieved eight grade 9s, one A\*, one grade 8 and one grade 6 at GCSE. I followed an academic study programme and in Year 13 achieved:

- *A-Level Mathematics A\**
- *A-Level Politics A\**
- *A-Level Physics A\**
- *A-Level English Literature A\**
- *EPQ A\**

I am currently studying Politics, Philosophy and Economics at Exeter University.

# How We Support You

At Highdown Sixth Form we 'go the extra mile' (Y12 student) to support our students in their studies, preparation for their examinations and providing information, advice and guidance related to their next steps – university, apprenticeships, employment or even a gap year!

## Study Support

Sixth Form study is very different from Key Stage Four, with a great emphasis on independent learning. Our specialist Sixth Form mentors will deliver a study skills programme through the first few months of Year 12. They will meet with students in the first week of term to discuss and set personal targets, and then, during the daily mentor sessions, will deliver advice on a range of effective study habits, from how to use study time effectively, to managing deadlines successfully.

The Sixth Form has a dedicated Sixth Form Study Centre, equipped with PCs, and also enabling Bring Your Own Device study through the academy wi-fi system. Students are timetabled Independent Learning slots to help them manage their various deadlines. For students finding early difficulties with the transition to Sixth Form study, our Learning Mentor, Mrs Kaminska, is available for 1:1 support to help students overcome obstacles to academic success. The Learning Support Department can also help if a student has any special educational needs and/or disabilities.

## Pastoral Support

Much of the PSHCE support for students is delivered through weekly mentoring sessions. Topics covered include dealing with stress and other mental health issues, being safe, and preparing to live on your own. All students facing any kind of emotional difficulties have access to the STAR Centre, a resource which supports students facing any kind of vulnerability. Furthermore, we support applications for the 16-19 Bursary fund.

## Preparing for Life After Highdown

During Year 12 and 13 decisions have to be made about life beyond Sixth Form and for many that may not necessarily mean applying for university. We provide access to excellent support to help students choose their future destinations. Students are offered help in researching and applying for jobs, writing CVs and standing out in interviews. We send home newsletters informing parents of various careers events happening locally and nationwide and have access to a careers adviser. We also work closely with local firms and careers advisers to prepare students who wish to apply for apprenticeships.

Much support is offered for those wishing to apply for Further or Higher Education. Our Year 13 mentor team supports students through every step of the UCAS process. We invite admissions mentors from local Universities to our Information Evening in September, to tell you what they are looking for in an outstanding application. The local Rotary Club support us in running mock interviews for students, and we offer extra support for those aspiring to the most competitive courses and universities.

### WHY STUDENTS CHOOSE TO STUDY AT HIGHDOWN SIXTH FORM:

*"I chose Highdown because . . .*

*. . . it offers more support for Sixth Formers than colleges."* [Katrina]

*. . . I believe Highdown provides a great learning environment, where I can achieve my best."* [Ben]

*. . . of the variety of subjects to choose from."* [Aisha]

*. . . I liked the facilities."* [Abigail]

*. . . it gave me a better option to learn with quality teachers about subjects I have a passion in."* [Robert]

*. . . the teachers were more enthusiastic than at college."* [Ryan]

*. . . the teachers are willing to go the extra mile."* [Anon]

# Admissions 2021

## Study Programmes

In the Sixth Form you will study subjects you choose within an agreed STUDY PROGRAMME. This may involve the study of purely academic A-Levels or Technical (vocational) subjects at either Level 2 or Level 3, or a mixture of these.

A-Levels and Level 3 qualifications are studied over two years with terminal examinations at the end of the second year of study.

In addition to your chosen subjects, your Study Programme will also include a daily mentor period, independent study periods and a period of enrichment every week as part of your timetable. You will also complete a week of work experience in Year 12.

Students who do not gain a grade 4+ in English Language or Mathematics will be required to retake these subjects.

Individual subjects have their own specific eligibility criteria outlined on the following page. However, your study programme will be determined by your grades at the end of Year 11 as follows:

### STUDY PROGRAMME 1

10+ grades 9-7 including 7+ in English and Mathematics

*Programme description:*

Up to 4 qualifications + Extended Project Qualification

### STUDY PROGRAMME 4

5+ grades 9-4 including 4+ in English and Mathematics

*Programme description:*

Up to 3 qualifications, e.g. 3 A-Levels or 2 A-Levels + 1 Level 3 qualification

### STUDY PROGRAMME 2

8+ grades 9-7 including 7+ in English and Mathematics

*Programme description:*

Up to 4 qualifications, e.g. 4 A-Levels or 3 A-Levels + Extended Project Qualification

### STUDY PROGRAMME 5

5+ grades 9-4 including 4+ in English or Maths, or 4+ grades 9-4 including 5+ in English and Maths

*Programme description:*

1 L3 qualification + 2 A-Levels (as recommended by the enrolment team and as appropriate to English/Mathematics pass) + GCSE retake English Language or Mathematics

### STUDY PROGRAMME 3

6+ grades 9-4 including 4+ in English and Mathematics

*Programme description:*

Up to 3 A-Levels

### STUDY PROGRAMME 6

4+ grade 3

*Programme description:*

Students study both L2 Business (2 GCSEs) and L2 IT (2 GCSEs). Level 2 Qualifications + GCSE retake in English Language/and or Mathematics (or approved qualification if Grade 1/2)

**Please note:** Students must pass their PPEs in Year 12 in order to continue to study the subject in Year 13, although it is desirable to achieve at least a D grade at this stage. If students are at risk of not achieving passes at the end of A-Level courses, students will be required to have a formal interview with the Head of Sixth Form. Students studying Study Programme 6 during year 12 must attain a merit in both level 2 courses to progress to a recommended level 3 Study Programme.



# Subject Eligibility Criteria 2021

SUBJECT	GCSE REQUIREMENT(S)
Art and Design or Art Photography	4+ in Art/Art Graphics/Photography or portfolio evidence
Art Fashion [Textile Design]	4+ in Textiles or Art, or portfolio evidence
Biology†	5-5+ in Trilogy Science (Higher Tier) or 5+ in Biology, and 5+ in Mathematics
Business Studies	4+ in English & Mathematics, 4+ in Business (if studied)
Chemistry†	5-5+ in Trilogy Science (Higher Tier) or 5+ in Chemistry, and 5+ in Mathematics
Computing	5+ in Mathematics and 5+ in Computing if studied. 6+ in Mathematics if Computing not studied at GCSE
Economics	5+ in English and 5+ in Mathematics
English Language and Literature	5+ in both English Language and Literature
English Literature	5+ in both English Language and Literature
Further Mathematics	7+ in Mathematics [to be studied with A-Level Mathematics]
Geography*	4+ in Geography and 5+ in English or 6+ in Geography and 4+ in English
History	4+ in History and 5+ in English or 6+ in History and 4+ in English
Information Technology [Level 3]	5 or more grades 9-4 including English or Mathematics, or 4 or more grades 9-4 including 5+ in English and Mathematics
Languages	5+ in French/Mandarin/Spanish (Higher Tier), as appropriate
Mathematics	7+ in Mathematics (strong 6 will be considered)
Mathematical Studies [2yr AS]*	4+ in Mathematics
Music	5+ in Music
Music Technology	4+ Music/Music Technology (if studied). If no Music/Music Technology at GCSE you must be able to demonstrate music technology experience.
Performing Arts [Level 3]	5 or more grades 9-4 including English or Mathematics, or 4 or more grades 9-4 including 5+ in English and Mathematics
Physics†	5-5+ in Trilogy Science (Higher Tier) or 5+ in Physics, and 6+ in Mathematics
Politics	4+ in English
Applied Psychology* [Level 3]	5 or more grades 9-4 including English or Mathematics, or 4 or more grades 9-4 including 5+ in English and Mathematics
Psychology*	4+ in a Science or 4-4 in Trilogy Science. 5+ in English and Mathematics
Religious Studies	4+ in English
Sociology	4+ in English
Sport [Level 3]	4+ in Biology or 4-4 in Trilogy Science. Must be involved in facilitating competitive sport(s). Eligibility to be discussed with Curriculum Leader

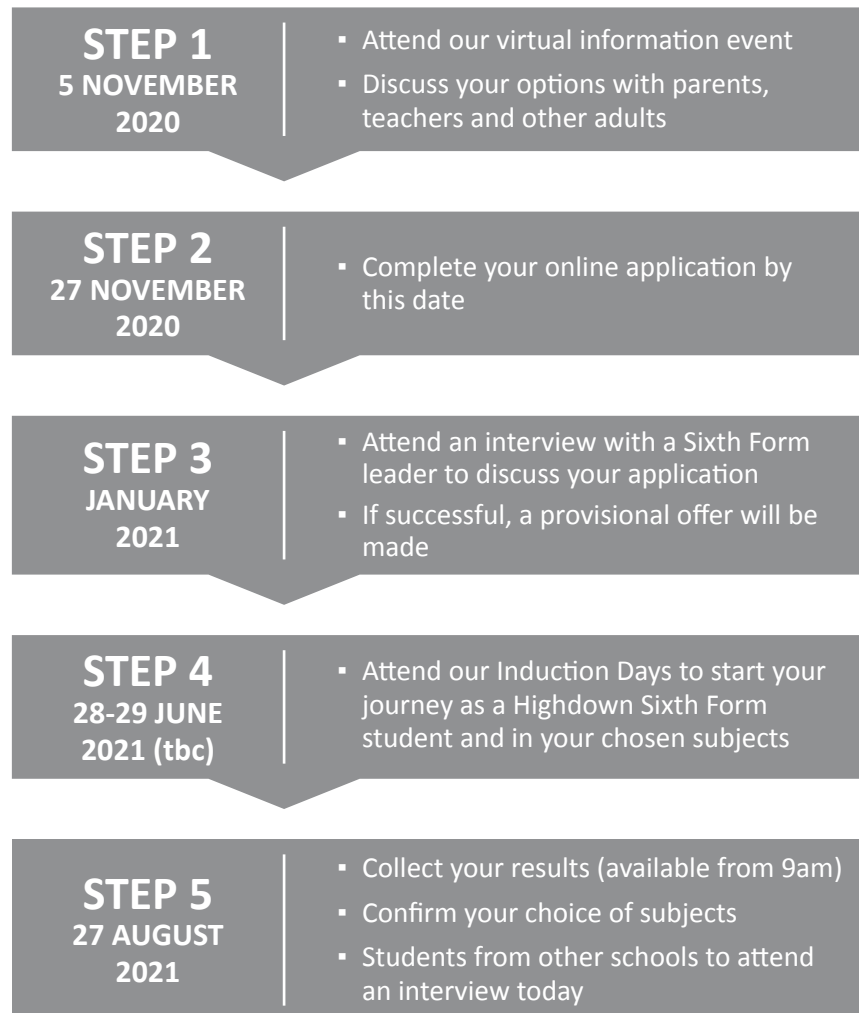
*'English' refers to either English Language or English Literature.*

*†Students studying a Science should study Level 3 Mathematics if they are not studying A-Level Mathematics.*

*\*Students studying Geography or Psychology are recommended to study Level 3 Mathematics if they are not studying A-Level Mathematics.*

# Applying to Join our Sixth Form

## The application process:



## SIXTH FORM ADMISSIONS POLICY

We will consider the following factors prior to offering a place in the Sixth Form:

- The GCSE grade criteria for the desired course(s) has been met
- There are sufficient places available on the desired course(s)
- Evidence of a commitment to the ethos of the academy and the expectations required in the Sixth Form for attitude to work and behaviour

Students will only be admitted to courses at the start of Year 12, unless there are exceptional circumstances.

All courses will only be offered subject to demand and staff availability.

## APPLYING TO OUR SIXTH FORM

Carefully complete the online application form, from our website. This must be submitted by **27 November 2020**.

It is very important you research your choices thoroughly and our Open Evening plays a vital role in this process. If you are unsure about your options then please do not hesitate to contact Mr Prior, Head of Sixth Form, or Mr Flynn, Head of Achievement for Years 12 and 13, to discuss further.

## The 16 to 19 bursary fund

### Vulnerable student bursary:

You could get up to £1,200 if at least one of the following applies:

- you are in, or recently left, local authority care
- you get Income Support (or Universal Credit in place of Income Support) in your name
- You're disabled and get both Employment and Support Allowance (ESA) (or Universal Credit in place of ESA), and either Disability Living Allowance (DLA) or Personal Independence Payment (PIP) in your name

### Discretionary student bursary:

Contact Mr Prior for more information.

Visit <https://www.gov.uk/1619-bursary-fund/overview> for more info.

### Overview

Our approach to Art and Design will stimulate your curiosity and knowledge and extend your skills in visual language. Students should be genuinely interested in using and manipulating two and three dimensional materials and evaluating the work of other artists to develop critical thinking.

*Awarding Organisation:*  
AQA

*Minimum course requirements:*  
GCSE Grade 4+ in Art/Art Graphics/  
Photography or portfolio of  
evidence

*More information:*  
Miss Garner

### Curriculum and assessment

#### YEAR 12

The first year is a time of learning new skills and building on knowledge already gained. You will experiment with materials and techniques, skills and methods to help you develop your own ideas. You will be supported by your teachers, who will be preparing you for the challenge of the Personal Investigation, which you will start in the Summer Term and continue with in Year 13.

During this year you are required to work in two or more areas of art and design, such as painting, drawing, mixed media, graphics, sculpture, photography and printmaking.

Projects will consist of research, development, investigation, experimentation and final outcomes.

#### YEAR 13

This year is split into two units of work; a coursework portfolio and an externally set assignment which culminates in a 15 hour examination at the end of the course.

During this year you will produce a Personal Investigation which is practical by nature, leading to a finished piece or pieces and is supported by a compulsory written element that links the work of other artists to the project. In this unit you are in charge and with our support you will produce a portfolio of work that reflects your strengths and interests. You will be encouraged to work in a variety of ways, exploring fully the subject you have chosen and utilising the skills you have learnt over the course.

### Post 18 opportunities

Many of our students go on to study art and design at a higher level. Students can also continue on a Foundation Course in Art and Design. Students can continue their Graphic studies on a Foundation Course or do a degree course in areas such as Animation, Illustration, Advertising or a more general Graphic Design degree.

#### Destinations of students in the last two years:

Many of our students have gone on to do Foundation courses in Art and Design.

Leicester University – Fine Art

Buckinghamshire University – Graphic Design

Solent University – Animation

Middlesex University – Film and Set Design

Southampton Solent – Hair and Make Up for TV and Media

### Expenses

Portfolio, sketchbooks and some material costs. Visits to museums and galleries in the UK.



## Overview

You will be introduced to a variety of experiences that explore a range of textile media, processes and techniques, looking at both traditional and new media. You will be required to demonstrate skills in all of the following:

- Awareness of the elements of textile design
- Awareness of intended audience or purpose
- Appreciation of the relationship of form and function
- Understanding a variety of textile methods

*Awarding Organisation:*  
AQA

*Minimum course requirements:*  
GCSE Grade 4+ in Textiles or Art or portfolio evidence

*More information:*  
Miss C Lobo

## Curriculum and assessment

### YEAR 12

In component 1, you will produce an extended collection of work that exemplifies aspects of developing knowledge, skills and understanding. You should provide evidence of research, the development of ideas, making skills and critical/contextual understanding. You should demonstrate your ability to sustain work from an initial starting point to a realisation.

In component 2, you will respond to stimulus, provided by AQA, to produce work which provides evidence of your ability to research and develop ideas and to make clear the link between your own and others' work within specific time constraints

### YEAR 13

In component 1, you will develop work based on an idea, issue, concept or theme leading to a finished outcome or a series of related finished outcomes. Practical elements should make connections with some aspect of contemporary or past practice of artist(s), designer(s), photographers or craftspeople and include written work of no less than 1000 and no more than 3000 words which supports the practical work.

In component 2, you will respond to a stimulus, provided by AQA, to produce work which provides evidence of your ability to work independently within specified time constraints, developing a personal and meaningful response which addresses all the assessment objectives and leads to a finished outcome or a series of related finished outcomes.

## Post 18 opportunities

Textile Design goes well with other subjects. If you want a career in design you might also consider Art & Design, Business Studies, or Computing as companion A Levels. Students with an Art Fashion (Textile Design) qualification go on to be Interior Designers, Costume Designers, Fashion Designers, Fashion/Textile Buyers, design window displays or work in Fashion merchandising.

### **Destinations of students in the last two years:**

Bournemouth University – Surface Pattern Design

Cardiff University – Fashion Design

Swansea University – Surface Pattern Design

## Expenses

A sketchbook for each component and material costs.

### Overview

During the course you will develop creative and practical skills for communicating and expressing ideas, feelings and meanings through photography. You will use investigative and critical skills to research and analyse. Through looking at the work of others and developing your own ideas, you will build up a solid understanding of photography in contemporary society and in other times and cultures.

You will be introduced to a range of photographic media, techniques and processes. You will be made aware of both traditional and new technologies. Your responses to these examples will be shown through practical and critical activities which will demonstrate an understanding of different styles, genres and traditions.

*Awarding Organisation:*  
AQA

*Minimum course requirements:*  
GCSE Grade 4+ in Art/Art Graphics/Photography or portfolio of evidence

*More information:*  
Miss Garner

### Curriculum and assessment

#### YEAR 12

During this year you will explore a range of photographic techniques to manipulate imagery and consider presenting work in an innovative way.

Projects are assessed on research, development and quality of final outcome(s).

#### YEAR 13

During this year you will work on a self-initiated personal study. For this project you will develop a theme, issue, idea or concept of your choosing. The project will consist of practical work and a 1000-3000 word essay.

You will also complete an externally set assignment, culminating in a 15 hour practical examination.

### Post 18 opportunities

Students can continue with their studies on an Art Foundation Course or progress straight to University or find employment in the Photography area.

#### Destinations of students in the last two years:

University of South Wales – Documentary Photography

### Expenses

You will need to have access to a digital camera, suitable amount of memory/storage and means of moving files from home to school (USB stick). You will need to provide your own sketchbooks or files in which to present your work.

### Overview

Biology is a fascinating and diverse area of study. You will deepen your knowledge of familiar topics such as cells, disease, and body systems and be introduced to advanced topics such as biochemistry and genetics.

Biology is a practical subject and you will quickly learn how to work carefully and accurately. By using a wide range of sources, you will hone your skills in research, note taking and presentation.

*Awarding Organisation: AQA*

*Minimum course requirements: GCSE Grade 5-5+ in Trilogy Science (Higher Tier) or 5+ in Biology, and GCSE Grade 5+ in Mathematics. Students should also study A Level Maths or L3 Maths*

*More information: Miss J Fathers*

### Curriculum and assessment

#### YEAR 12

Students will gain an excellent basis for future study. You begin by studying how cells function at a molecular level and how substances are transported around organisms. You will then look at the functions of different body systems and how they are affected by disease and the role played by mammalian blood in the defence against pathogens. The second unit takes you off to look at adaptations, diversity and habitats.

#### YEAR 13

Students will develop many of the themes encountered in Year 12. You will begin by studying more advanced cell functions such as the role of ATP in respiration and photosynthesis. Towards the end of the course, you will further your knowledge of the control of body systems and deepen your knowledge of genetics and apply your knowledge to understand gene therapy and genetic fingerprinting.

#### ASSESSMENT

Three 2 hour examinations  
Compulsory Practical Endorsement

### Post 18 opportunities

Biologists observe the environment and the behaviour of organisms within it. They may choose to become specialists with a focus on a particular aspect of Biology. Their analytical skills and ability to make connections between complex ideas is of interest to many employers. Academic research, work in the Department of Health, Conservation, Dietician, Food Industry and Production, Laboratory Technician, Journalism, Teaching, Nursing and Midwifery, Pharmacy, the Police Service, Sales or Tutoring are just a few of the careers that Biology qualifications can give access to.

#### Destinations of students in the last two years:

Anglia Ruskin University – Biomedical Science

Bangor University – Marine Biology

University of East Anglia – Environmental Science

Kingston University – Biomedical Science

Warwick University – Biomedical Science

### Expenses

You will need to purchase text books. We will endeavour to attend at least one series of lectures to supplement the course.



### Overview

Business Studies aims to provide an understanding of the internal workings of organisations, their business behaviour and the environment in which they operate.

Business Studies is a subject which incorporates a variety of different styles including both numeracy and literacy.

*Awarding Organisation:*  
AQA

*Minimum course requirements:*  
GCSE Grade 4+ in English and Mathematics, 4+ in Business (if studied)

*More information:*  
Mrs S Stevens

### Curriculum and assessment

#### YEAR 12

During this year you will complete:

- What is business?
- Managers, leadership and decision making
- Decision making to improve marketing performance
- Decision making to improve operational performance
- Decision making to improve human resource performance

#### YEAR 13

During this year you will complete:

- Analysing the strategic position of a business
- Choosing strategic direction
- Strategic methods: how to pursue strategies
- Managing strategic change

#### ASSESSMENT

##### Paper 1: Business 1

All content assessed – 2 hour written exam

Three compulsory sections:

- Section A – 15 multiple choice questions
- Section B – short answer questions
- Section C and D – two essay questions

##### Paper 2: Business 2

All content assessed – 2 hour written exam

Three data response compulsory questions made up of three or four part questions.

##### Paper 3: Business 3

All content assessed – 2 hour written exam

One compulsory case study followed by approximately six questions.

### Post 18 opportunities

This course will provide a foundation for students looking to move into the workplace or aiming to continue their studies with a business related degree or many other subjects at university.

#### Destinations of students in the last two years:

Brunel University London – Business Management  
VISA Europe Graduate Apprenticeship  
Nottingham Trent University – Law with Psychology  
University of Portsmouth – Business and Management

### Expenses

Students are required to purchase their own text books and need a calculator. There will also be periodic trips which will incur additional costs to help develop their understanding.

## Overview

This is a V Cert in Level 1/2 Technical Award in Business Enterprise.

*Awarding Organisation:*  
NCFE

*Minimum course requirements:*  
4 or more GCSEs at Grades 3+

*More information:*  
Mrs S Stevens

## Curriculum and assessment

### CURRICULUM

- **Unit 1** – Introduction to Business and Enterprise which is externally assessed.
- **Unit 2** – Understanding Resources for Business and Enterprise Planning which is assessed internally under controlled conditions.

### ASSESSMENT

- External Assessment
- Internal Assessment
- Internal Assessment
- Internal Assessment

## Where might this course lead?

The course is designed to provide students with practical experience of business, enabling them to continue further in vocational or academic studies or into the workplace. Practical application takes place in many of the units and students have the opportunity to work with business people and apply their knowledge in work environments.

## Expenses

Students are required to purchase the recommended textbook. Other expenses include the costs of trips within the local area.

### Overview

A Level Chemistry is a rigorous and highly-regarded academic challenge. You will delve deeply into familiar topics such as atomic structure, carbon chemistry and energetics and be introduced to new areas such as redox chemistry and spectroscopy.

Chemistry is a practical subject and you will quickly learn how to use Quickfit apparatus and how to perform a successful titration. Your numeracy skills will be finally honed and it is expected that you will develop a real appreciation of the meaning of the numbers you are using and applying. You will be required to solve practical and theoretical problems so it is important that you are ready to try out different solutions and be ready to think flexibly.

### Curriculum and assessment

*Awarding Organisation:*  
AQA

*Minimum course requirements:*  
GCSE Grade 5-5+ in Trilogy Science (Higher Tier) or 5+ in Chemistry, and GCSE Grade 5+ in Mathematics. Students should also study A Level Maths or L3 Maths

*More information:*  
Miss J Fathers

#### YEAR 12

During this year you will cover the following key areas:

- Atomic structure and the periodic table
- Carbon chemistry
- Energetics
- Quantitative chemistry
- Spectroscopy
- Green chemistry

#### YEAR 13

During this year you will develop many of the themes encountered in Year 12.

- You will widen your appreciation of carbon chemistry through study of benzene and the aromatics
- You will enjoy the intellectual challenge of entropy and equilibrium
- You will gain some appreciation of chemistry in the real world in your studies of nmr and other analytical techniques

#### ASSESSMENT

Three 2 hour examinations  
Compulsory Practical Endorsement

### Post 18 opportunities

Chemists are excellent problem solvers who are highly numerate so they have a range of skills that are attractive to a very broad range of future employers. The specific technical skills directly relevant to chemistry-related careers include fine practical skills, collecting and collating data, research and report writing, sophisticated quantitative processing and thorough evaluation of experimental methods, published papers and data collected from a range of sources. Chemists are highly sought-after in the worlds of Finance and Law.

#### Destinations of students in the last two years:

Cardiff University – Bio Chemistry

Oxford University – Law

Cambridge University – Law

Oxford University – Chemistry

Manchester University – Paramedic Science

Nottingham University – Chemical Engineering

### Expenses

You will need to purchase text book and a lab coat. We will endeavour to attend at least one series of lectures to supplement the course.



### Overview

The aim of this course is to equip students with advanced skills and cultural knowledge to communicate and interact with people in an authentic Mandarin-speaking environment. It also provides a sound foundation of Chinese language and culture similar to that covered within an undergraduate course. It develops an interest in, and enthusiasm for the study of language and culture. It allows students to pursue their studies in related fields and take part in wider study opportunities in the UK or abroad, and leads to further employment opportunities.

*Awarding Organisation:*  
Cambridge Pre-U

*Minimum course requirements:*  
GCSE Grade 5+ in Mandarin (Higher Tier)

*More information:*  
Miss L Hurst

### Curriculum and assessment

TOPICS	ASSESSMENT
<ul style="list-style-type: none"><li>• Family</li><li>• Young people</li><li>• Education</li><li>• The media</li><li>• Work and Leisure</li><li>• Equality of opportunity</li></ul>	<p>The Chinese culture paper consists of Chinese history, film and literature.</p> <p>Paper 1 – Speaking (20%)</p> <p>Paper 2 – Listening, reading and translation (30%)</p> <p>Paper 3 – Writing and usage (25%)</p> <p>Paper 4 – Chinese culture (25%)</p>

### Skills that will be developed

The skills of speaking, listening, reading and writing are supplemented by Chinese-specific skills: accurate identification of roman transliteration, including tones, and the use of a radical-indexed Chinese dictionary.

The aims of the course are:

- To develop the ability to understand Mandarin Chinese
- To enable the candidate to communicate confidently and clearly
- To form a sound foundation of skills, language and cultural knowledge required for further study and employment
- To develop insights into the culture and civilization of countries where Mandarin is spoken
- To encourage positive attitudes to language learning and a sympathetic approach to other cultures and civilizations
- To further intellectual and personal development by promoting learning and social skills

### Post 18 opportunities

As well as allowing candidates to develop advanced language skills, the course will develop knowledge in Chinese culture. In addition to providing a secure foundation for wider study opportunities in higher education, the course equips candidates with a range of skills for careers in business, education and the arts.

#### Destinations of students in the last two years:

University of Sheffield – History and Chinese

SOAS, University of London – Chinese

### Expenses

Students need to purchase Chinese language textbooks and dictionaries.

### Overview

Computer Science is not about learning to use tools or just training in a programming language (though you will do both). Instead the emphasis is on computational thinking which is a kind of reasoning used by both humans and machines. Computer Science involves questions that have the potential to change how we view the world e.g. we may be computing with DNA in the future, with computer circuits made of genes. This leads to the question, does the natural world compute?

*Awarding Organisation: AQA*

*Minimum course requirements: GCSE Grade 5+ in Mathematics and Grade 5+ in Computing if studied. GCSE Grade 6+ in Mathematics if Computing not studied at GCSE.*

*More information: Mr D Stephenson*

### Curriculum and assessment

YEAR 12	YEAR 13	ASSESSMENT
<ul style="list-style-type: none"><li>• Problem solving and Boolean logic</li><li>• Programming and data representation</li><li>• Machine level architecture</li><li>• The stored program concept</li><li>• The structure of the internet</li><li>• Relational database design and implementation (SQL, DDL, Normalisation)</li></ul>	<ul style="list-style-type: none"><li>• Finite state and Turing machines</li><li>• Comparison of algorithmic complexity</li><li>• What you cannot compute and why</li><li>• Programming paradigms and concepts</li><li>• Complex networking theory</li><li>• Operating Systems</li></ul>	<p>Students sit two examinations worth 80% at the end of Year 13.</p> <p>In addition to a thesis like research project into a computing topic or the development of a programmed solution for a real world client worth 20%.</p>

### Post 18 opportunities

This course, with its emphasis on abstract thinking, general problem solving, algorithmic and mathematical reasoning, scientific and engineering-based thinking, is a good foundation for those who wish to go on to higher education courses or employment where knowledge of computing would be beneficial. You can study computing and go onto a career in medicine, law, business, politics or any type of science.

#### Destinations of students in the last two years:

Cardiff University – Computer Science

Newcastle University – Computer Science

Nottingham University – Computing Science with Artificial Intelligence

Oxford University – Physics

University of Reading – Cybernetics, Computer Science

### Expenses

Students are required to purchase text books but we will provide all the software needed for the course.

### Overview

The aim of studying Economics is to apply economic theory to support an analysis of current economic problems and issues. Our aim is to introduce students to the concepts of both micro and macroeconomic theory and discuss the relationships between them.

*Awarding Organisation:*  
AQA

*Minimum course requirements:*  
GCSE Grade 5+ in Mathematics and  
GCSE Grade 5+ in English

*More information:*  
Mrs S Stevens

### Curriculum and assessment

#### YEAR 12

*The operation of markets and market failure:*

- Economic methodology and the economic problem
- Price determination in a competitive market
- Production, costs and revenue
- Competitive and concentrated markets
- The market mechanism, market failure and government intervention in markets

*The national economy in a global context:*

- The measurement of macroeconomic performance
- How the macroeconomy works; the circular flow of income, AD/AS analysis and related concepts
- Economic performance
- Macroeconomic policy

#### YEAR 13

*Individuals, firms, markets and market failure:*

- Perfect completion, imperfectly competitive markets and monopoly
- The labour market
- The distribution of income and wealth: poverty and inequality

*The national and international economy:*

- Financial markets and monetary policy
- Fiscal policy and supply-side policies
- The International Economy

#### ASSESSMENT

Paper 1: Markets and Market Failure – 2 hour paper

Paper 2: National and International Economy – 2 hour paper

Paper 3: Economic Principles and Issues – 2 hour paper

### Post 18 opportunities

Students who study Economics are able to move onto university to read subjects such as Accountancy, Economics, Politics, International Relations and Mathematics. In addition, employers regard Economics highly as the subject incorporates many employability skills such as data analysis, evaluation of concepts and graphical annotation. The course also emphasises the application of economic theory to the real world environment, enabling students to gain a grasp of current affairs and the impact this has upon the economy as a whole.

#### Destinations of students in the last two years:

University of Leicester – Management Studies  
University of Warwick – Politics, Philosophy and Law  
University of Essex – Economics  
University of Nottingham – Economics  
Cardiff University – History

### Expenses

Students are required to purchase their own text books. There will also be periodic trips which will incur additional costs to help develop their understanding.

# English Language & Literature *Advanced Level*

## Overview

Do you enjoy creative writing, as well as reading and analysing a range of different text types? Do you want an element of choice with the texts you choose to study? The OCR English Language and Literature specification provides you with the opportunity to both read and write a wide variety of different texts, including non-fiction, narrative, novels, plays and poetry. This course is ideal for anyone who is creative, analytical and motivated by the prospect of studying a breadth of texts in a variety of different ways.

*Awarding Organisation:*  
OCR

*Minimum course requirements:*  
GCSE Grade 5+ in both English Language and Literature

*More information:*  
Mrs M Grantham

## Curriculum and assessment

### COMPONENT 1 Exploring Non-Fiction and Spoken Texts (16%)

Students will study an anthology of twenty different spoken and written texts from different time periods and contexts.

*Students will be assessed for this component through a 1 hour examination at the end of the two year course.*

### COMPONENT 2 The Language of Poetry and Plays (32%)

Students will study a poetry collection by one poet from a choice of six. Students will also study one drama text from a choice of six.

*Students will be assessed for this component through a 2 hour examination at the end of the two year course.*

### COMPONENT 3 Reading as a Writer, Writing as a Reader (32%)

Students will study one novel from a choice of six. Students will also study narrative writing.

*Students will be assessed for this component through a 2 hour examination at the end of the two year course.*

### COMPONENT 4 Independent Study – Analysing and Producing Texts (20%)

Students will study one post-2000 text in conjunction with another text of their choice. Students will also study non-fiction writing.

*Students will be assessed for this component through coursework during the second year of the course.*

## Post 18 opportunities

Language and Literature students have gone on to careers in Journalism, Advertising, Broadcasting, Law, Social Science and Teaching.

### Destinations of students in the last two years:

Exeter University – English

Bath Spa University – Publishing and Creative Writing

University of East Anglia – Medicine

## Expenses

Students will be required to purchase their own copies of the set texts. The department also runs optional theatre trips and external study days that students may wish to attend. These visits will incur additional costs.



### Overview

Do you enjoy novels, plays and poetry? Are you keen to explore texts written in the 21st Century, as well as literary heritage texts that have influenced generations? The OCR English Literature specification allows you to build on and develop the skills acquired during GCSE English Literature by approaching a range of more sophisticated texts. Current students studying the course particularly enjoy the opportunity afforded by the specification to engage in a piece of coursework in an area of personal interest.

*Awarding Organisation:*  
OCR

*Minimum course requirements:*  
GCSE Grade 5+ in both English Language and in English Literature

*More information:*  
Mrs M Grantham

### Curriculum and assessment

#### COMPONENT 1 Drama and Poetry pre-1900 (40%)

Students will study a Shakespeare play, drama and poetry pre 1900.

*Students will be assessed for this component through a 2 hour 30 minute exam at the end of the two year course.*

#### COMPONENT 2 Comparative and Contextual Study (40%)

Students will study a collection of texts from one of the following topics:

- American Literature 1880–1940
- The Gothic
- Dystopia
- Women in Literature
- The Immigrant Experience

*Students will be assessed for this component through a 2 hour 30 minute exam at the end of the two year course.*

#### COMPONENT 3 Independent Study (20%)

Students will undertake a coursework project of their choosing focussing on modern literature.

*Students will be assessed for this component through coursework which is internally assessed and externally moderated.*

### Post 18 opportunities

A-Level English Literature can complement many other subjects and can be a valuable contrast for students studying scientific subjects who wish to demonstrate a range of interests.

#### Destinations of students in the last two years:

Cambridge University – English Literature

Durham University – Politics, Philosophy and Economics

University of East Anglia – Culture, Literature and Politics

### Expenses

Optional theatre trips and university lectures are organised by the department. Students may be required to purchase key texts.

### Overview

The aim of this course is to equip students with the confidence to effectively communicate (both in spoken and written forms) and develop a thorough understanding of the culture of countries and communities where French is spoken. It also provides a stepping stone for university courses in French and/or Francophone Studies. It develops an interest in, and enthusiasm for, language learning and encourages students to consider their study of French in a broader context.

*Awarding Organisation:*  
AQA

*Minimum course requirements:*  
GCSE Grade 5+ in French  
(Higher Tier)

*More information:*  
Miss L Hurst

### Curriculum and assessment

#### TOPICS

- Aspects of French-speaking society
- Artistic culture in the French-speaking world
- Aspects of political life in French-speaking society
- One French language text
- One French language film
- Grammar

There is also an individual research project.

#### ASSESSMENT

Students are assessed in listening, reading and writing (as one paper), another writing paper (film/literature essay) and speaking (which includes an individual research project) at the end of Year 13.

#### AIMS

French A Level aims to encourage students:

- To develop the ability to comprehend French in a wide range of contexts
- To enable the student to communicate confidently and clearly in French for a variety of purposes
- To form a sound base of skills, language and attitudes required for further study, work and leisure
- To develop useful knowledge of, and insights into, past and contemporary French-speaking culture
- To encourage positive attitudes to, and a lasting appreciation of, language learning
- To further intellectual and personal development by promoting learning and social skills
- To gain valuable skills for foreign travel, further education and employment

### Post 18 opportunities

As well as allowing candidates to develop their language skills, the course will foster an awareness of French culture and history. In addition to providing a secure foundation for study in higher education, the course equips candidates with a range of skills for careers in business, education and the arts.

#### Destinations of students in the last two years:

Oxford University – French  
UCL – French and Spanish

### Expenses

Students will be expected to purchase their own textbook and grammar book. It is also expected that they will purchase a good quality French to English dictionary.

### Overview

A Level Further Mathematics is a rigorous and challenging area of study. You will build on the topics covered in A Level Mathematics as well as having the opportunity to study areas of Mathematics that may not otherwise be met until University.

You will develop your problem solving skills and learn to communicate solutions in an efficient and concise way for both Pure and Applied modules.

*Awarding Organisation:*  
Edexcel

*Minimum course requirements:*  
GCSE Grade 7 in Mathematics  
(to be studied with A-Level  
Mathematics)

*More information:*  
Mr W Dineley

### Curriculum and assessment

In addition to further study of some of the topics covered at A Level, you will also study:

- Complex Numbers
- Matrices
- Calculus
- Polar Coordinates
- Hyperbolic Functions
- Differential Equations

You will also study one of the following areas of Mathematics:

- Mechanics
- Statistics

#### ASSESSMENT

Three 2 hour papers to be taken at the end of Year 13.

### Post 18 opportunities

Students with a Further Mathematics qualification go on to study many courses at university from Engineering and operational research to Pure Science and Mathematics.

#### Destinations of students in the last two years:

University of Oxford – Mathematics

Exeter University – Mathematics

Nottingham University – Mathematics

### Expenses

Students will be expected to purchase their own textbooks. An appropriate scientific or graphical calculator is essential and there is also the possibility of a trip. Further details will follow on the Induction Days.

### Overview

The aim of this course is to allow students to develop and apply their understanding of geographical concepts and processes and to understand and interpret our changing world. Students will develop their awareness of the complexity of interactions within and between societies, economies, cultures and environments at both the local and global scale.

*Awarding Organisation:* Edexcel

*Minimum course requirements:* GCSE Grade 4+ in Geography and 5+ in English or Grade 6+ in Geography and 4+ in English. It is recommended students study A Level Maths or L3 Maths

*More information:* Mr Sheridan

### Curriculum and assessment

#### TOPICS

- Tectonic Processes and Hazards
- The Water Cycle and Water Insecurity
- The Carbon Cycle and Energy Security
- Coastal Landscapes and Change
- Globalisation
- Superpowers
- Regenerating Places
- Migration, Identity and Sovereignty

#### Synoptic themes include:

- Players
- Attitudes and Actions
- Futures and Uncertainties

#### ASSESSMENT

##### Unit 1 – Physical Geography

*2 hour 15 mins written examination worth 30%*

##### Unit 2 – Human Geography

*2 hour 15 mins written examination worth 30%*

##### Unit 3 – Synoptic Unit

*Based on a resource booklet focusing on a geographical issue worth 20%*

##### Unit 4 – Independent Geographical Investigation

*Coursework report of 3000 – 4000 words worth 20%*

### Post 18 opportunities

Geographers look at issues from a wide perspective and develop a range of skills that are attractive to a very broad range of future employers. The specific technical skills directly relevant to geography-related careers include field work, research and report writing, preparing maps and diagrams, and using social survey and interpretative methods.

#### Destinations of students in the last two years:

University of Reading – Geography

Manchester University – Geography

Sussex University – Geography

University of York – Environmental Geography

Cardiff University – Environmental Geography

### Expenses

One week residential field work. Students will investigate coastal landscapes and change, regenerating places and be required to produce a coursework report for Unit 4. Please note that the approximate cost of the field trip is £400. Students will need to purchase their text books:

Edexcel A level Book 1 – ISBN: 978-1-4718-5654-9 (Iceberg book) £26 from Amazon

Geography for Edexcel year 1 – ISBN: 978-0-19-836645-4 (Lizard book) £27 from Amazon



### Overview

The History A Level course focuses on history from the end of the medieval period to the end of the twentieth century, and includes new elements as well as content students will be familiar with from their GCSE studies. The A Level builds on the historical thinking skills developed from Key Stage 3, for example causation, evaluating primary evidence and evaluating interpretations.

*Awarding Organisation:* OCR

*Minimum course requirements:*  
GCSE Grade 4+ in History and  
5+ in English or 6+ in History  
and 4+ in English

*More information:*  
Ms A Duncan

### Curriculum and assessment

#### YEAR 12

- England, 1445-1509: Lancastrians, Yorkists and Henry VII
- International Relations 1890-1941

#### YEAR 13

- Investigation/topic based essay
- Civil Rights in the USA 1865-1992

#### ASSESSMENT

Students will take three written examinations:

- British Paper – 25%
- International Relations in the 20th Century – 15%
- Civil Rights in the USA 1865-1992 – 40%
- Coursework – 20%

### Skills that will be developed

- Knowledge and understanding
- Research skills
- Critical thinking
- Analytical and evaluative reasoning
- Extended writing
- Source work
- Empathy

### Post 18 opportunities

History is a subject which is highly regarded by universities, not only for its content and ability to develop a student's capacity for knowledge but also the skills required to study it at an advanced level. Students who successfully complete the subject at A Level demonstrate enhanced understanding of causal and consequential factors and show a higher ability of independent research skills as well as increased empathy. These are all assets when universities are completing their selection process.

#### Destinations of students in the last two years:

Oxford University – History

Cardiff University – History

Birmingham University – History

Sussex University – Law

Bristol University – History

### Expenses

Students will be expected to purchase their own course textbooks. Some students also purchase additional reference material for the coursework unit and are given an extended reading list in their course guide. We have our library as well as links to Reading University Library.

### Overview

This course will help you understand the IT solutions that businesses use in the modern world.

In addition to traditional office applications you will learn about development for social media (web design), data analysis and strategies to help protect against cyber-attacks.

*Awarding Organisation:*  
OCR

*Minimum course requirements:*  
4 or more GCSE Grades 3+

*More information:*  
Mr D Stephenson

### Curriculum and assessment

#### YEAR 12

- How businesses use social media
- Design and implementation of business media
- Technology of the internet
- Technology of the web
- Digital devices and commercial applications
- Cybersecurity

#### Using Data Analysis Software

- Spreadsheet design
- Database design and implementation
- Using software to analyse data for business

#### Information Technology Systems

- Software
- Hardware
- Networking
- Emerging Technology

#### Website Development

- Website Design
- HTML and CSS
- Dynamic content
- Design for Business

#### ASSESSMENT

Unit 1: Essentials of IT (*External exam – 33%*)

Unit 2: Essentials of Cyber Security (*Externally exam – 16.5%*)

Unit 16: Using Social Media Channels for Business (*Coursework – 16.5%*)

Unit 17: Using Data Analysis Software (*Coursework – 33%*)

### Post 18 opportunities

This course, with its emphasis on practical and creative skills in ICT and business alongside problem solving and analytical thinking is an good foundation for those who wish to enter higher education, modern apprenticeships or business. The skills gained on this course will support students no matter where their future takes them. This course has also been recognised as a route into the CISCO cyber security program.

### Expenses

Students are required to purchase text books but we will provide all the software needed for the course.

### Overview

The Information Technology qualification enables learners to develop academic and employability skills that are essential to modern business practices in addition to supporting a wide range of careers in almost every sector.

*Awarding Organisation:* Pearson

*Minimum course requirements:*  
5 or more GCSEs Grades 9-4 including English or Mathematics, or 4 or more GCSEs Grades 9-4 including 5+ in English and Mathematics

*More information:* Mr D Stephenson

### Curriculum and assessment

#### YEAR 12

##### Creating Systems to manage information

- Relational Databases Design
- Relational Database Development
- Relational Databases in Business

##### Using Social Media in Business

- Business uses of Social media
- Online Marketing
- Design and implantation of business media
- Community building in the digital era

#### ASSESSMENT

Most units studied use coursework to allow students to build a significant digital portfolio as they develop their skills, which for many is a better option than high risk exams.

Unit 1: Information Technology Systems (*written exam – 2 hours, 35%*)

Unit 2: Creating Systems to manage information (*coursework – 10 hour limit, 25%*)

Unit 3: Using Social Media in Business (*coursework – 25%*)

Unit 6: Website Development Coursework (*coursework – 15%*)

Students will complete units 2 and 3 in Year 12 gaining the national certificate in IT then complete extended award (A level) in Year 13.

#### YEAR 13

##### Information Technology Systems

- Software
- Hardware
- Networking
- Emerging Technology

##### Website Development

- Website Design
- HTML and CSS
- Dynamic content
- Design for Business

### Post 18 opportunities

This course, with its emphasis on practical and creative skills in ICT and business alongside problem solving and analytical thinking is an good foundation for those who wish to enter higher education, modern apprenticeships or business. The skills gained on this course will support students no matter where their future takes them.

### Expenses

Students are required to purchase text books but we will provide all the software needed for the course.

### Overview

A Level Mathematics is a rigorous and challenging area of study. You will build on the topics of algebra and geometry met at GCSE as well as being introduced to calculus, exponentials and logarithms.

*Awarding Organisation:* AQA

*Minimum course requirements:* GCSE Grade 7+ in Mathematics (strong 6 will be considered).

*More information:*  
Mr W Dineley

### Curriculum and assessment

#### TOPICS

- Proof
- Algebra and Functions
- Coordinate Geometry
- Sequences and Series
- Trigonometry
- Exponentials and Logarithms
- Differentiation
- Integration
- Numerical Methods
- Vectors
- Quantities and Units in Mechanics
- Kinematics
- Forces and Newton's Law
- Moments
- Statistical Sampling
- Data Presentation and Interpretation
- Probability
- Statistical Distributions
- Statistical Hypothesis Testing

#### ASSESSMENT

Three 2 hour papers to be taken at the end of Year 13.

### Post 18 opportunities

Mathematics is one of the biggest facilitating subjects and it is essential for many higher education courses and careers, including Mathematics, Engineering, Accountancy, Computing, Medicine and the Sciences.

#### Destinations of students in the last two years:

University of Oxford – Mathematics

Nottingham University – Mathematics

Swansea University – Mechanical Engineering

### Expenses

Students will be expected to purchase their own textbooks and may be required to purchase and complete a transition workbook in the first term of Year 12 to aid the step up to A Level study. An appropriate scientific or graphical calculator is essential and there is also the possibility of a trip. Further details will follow on the Induction Days.



### Overview

Core Mathematics is for everyone. It is diverse, engaging and essential in equipping students with the right skills to reach their future destinations, whatever that may be.

This course will particularly suit students who are also studying Psychology, Sciences, Economics and / or Geography but will help all students develop the real life mathematical skills needed in the workplace.

*Awarding Organisation:*  
AQA

*Minimum course requirements:*  
GCSE Grade 4+ in Mathematics

*More information:*  
Mr W Dineley

### Curriculum and assessment

#### YEAR 12 and YEAR 13

You will follow either teaching route to explore:

- Statistical Techniques
- Critical Path and Risk Analysis
- Graphical Techniques

#### ASSESSMENT

Two written examinations at the end of the study period leading to a Level 3 Qualification equivalent to an AS Level.

### Post 18 opportunities

Mathematical Studies aims to prepare students for the demands of higher education and work where there is a distinct mathematical or statistical elements. This is an ever growing field with many careers now requiring high level budgeting skills and the ability to quickly and effectively analyse large amounts of data.

The Level 3 Certificate qualification will be graded on a five-point scale: A, B, C, D and E with the following UCAS points 60, 50, 40, 30 and 20 respectively.

### Expenses

Students will be required to purchase textbooks and course materials.

### Overview

The A Level Music qualification offers exciting opportunities for the study of music through both practical and academic disciplines. The three core elements of performance, composition and developing musical understanding are taught and assessed across the two years. The course not only provides a structured way of achieving proficiency in the three basic skills but also allows the students to pursue their individual specialisms.

*Awarding Organisation:*  
AQA

*Minimum course requirements:*  
GCSE Grade 5+ in Music

*More information:*  
Mr H Santer

### Curriculum and assessment

As described above, there are 3 core components of the course:

#### PERFORMING

students will develop their skills in both solo and ensemble performing. There are many opportunities for students to take part in extra curricular activities. Students may run ensembles such as orchestras, bands and choirs if this is of interest.

#### COMPOSING

Students will produce two compositions – one to a brief set by the exam board and also a free composition. Students will also learn the basic principles of harmony.

#### APPRAISING

This unit of the course allows students to develop their knowledge of music theory and the socio historic context of works chosen by AQA. In doing so, links will be made with the styles of music we listen to today.

#### ASSESSMENT

Coursework is 60% of the course and is assessed through an 10 minute performance on the students chosen instrument/s, and 2 compositions lasting a minimum of 4½ minutes. The remaining 40% of the course is assessed via a 2½ hour exam in the summer term of Year 13.

### Post 18 opportunities

The music courses provide an excellent basis for lifelong learning and for Higher Educations in Music, and many students continue to study Music at university. Studies in Music can lead to Performance, Composition, Musicology, Ethnomusicology, Sound Engineering, Conducting, Popular Music and Jazz, Artist Management and Public Relations, Music Therapy and Music Education.

#### Destinations of students in the last two years:

Birmingham University – Music

Nottingham University – Music

University of Gloucester – Creative Music Technology

### Expenses

Students need to purchase scores of the set works. AS/A Level music student conferences.

## Overview

Music Technology AS and A Level offers a range of exciting opportunities to learn about sequencing, sampling, studio recording and production, composing, and the history of recorded music.

There are three areas of study which underpin the course:

1. Recording and production techniques for both corrective and creative purposes
2. Principles of sound and audio technology
3. The development of recording and production technology

## Curriculum and assessment

As described above there are three areas of study which are then assessed over a series of four components:

- **Recording** – students will develop skills in capturing, editing, and mixing sounds to produce an audio recording.
- **Technology-based composition** – students develop skills in creating, editing and structuring sounds to develop a technology-based composition.
- **Listening and Analysing** – students develop listening and analysing skills through the study of a range of production techniques. These are then assessed in a listening exam which covers music from 1910 up to the current day.

- **Producing and analysing** – students study the techniques and principles of music technology through a series of written and practical tasks, in the context of audio and MIDI materials provided by Edexcel Pearson.

### ASSESSMENT

Coursework is 40% of the course and takes the form of a multi-track recording and a technology based composition. The remaining 60% of the course is assessed through a listening and analysing exam and practical producing and analysing exam.

*Awarding Organisation:*  
Edexcel

*Minimum course requirements:*  
GCSE Grade 4+ in Music/Music Technology (if studied). If no Music/Music Technology at GCSE you must be able to demonstrate music technology experience.

*More information:*  
Mr H Santer

## Skills that will be developed

- understand the principles of sound and audio technology and how they are used in creative and professional practice
- understand a wide range of recording and production techniques
- develop the skills to create and manipulate sound in imaginative and creative ways
- develop skills in critical and analytical listening to evaluate the use of sound and audio technology in students' own and others' work
- understand the interdependence of sound engineering knowledge, understanding and skills
- understand the basic principles of acoustics, psycho-acoustics, and the digitalisation of sound
- understand the latest developments in music technology and the impact they have on technology-based composition, performance and the tonal qualities of recordings
- develop and extend the knowledge, understanding and skills needed to create recordings and technology-based compositions which communicate effectively to the listener

## Post 18 opportunities

Our students go on to study a wide range of music technology based courses which lead to careers in studio engineering, live sound, sound design, sound technician, DJ-ing, stage and set design, PA operation and acoustic design.

### Destinations of students in the last two years:

Bath Spa – Creative Music Technology

University of Salford – Creative Music Technology

Bournemouth University – Music and Sound Production

York University – Music Technology Systems (Electronics)

## Expenses

Students need to purchase AS/A2 Edexcel Pearson Music Technology study guides.

### Overview

Performing Arts students are dynamic, creative, outgoing and confident people. The Extended Certificate will prepare students for the modern demands of the acting industry, enabling them to be flexible and adaptive. Learning how to develop acting techniques and hone their performance skills.

*Awarding Organisation:* OCR

*Minimum course requirements:*  
5 or more GCSEs Grades 9-4 including English or Maths, or  
4 or more GCSEs Grades 9-4 including 5+ in English and Maths

*More information:* Mrs S Lake

### Curriculum and assessment

#### 2 YEAR OVERVIEW

- |                         |   |
|-------------------------|---|
| <b>Mandatory Units:</b> | <ul style="list-style-type: none"><li>• Prepare to work in the performing arts sector</li><li>• Proposal for a commissioning brief</li><li>• Influential performance practice</li><li>• Combined Arts</li></ul> |
| <b>Optional Units:</b>  | <ul style="list-style-type: none"><li>• Improvisation</li><li>• Performing repertoire</li></ul>   |

*You will take five units made up of four mandatory and an optional unit*

*Performance and coursework assessed  
Internal and External examinations*

### Skills that will be developed

These units will give you an understanding of the performing arts in wider contexts, including the way the sector works, job roles, progression opportunities, how to build strategies for sustaining a freelance career, and how to plan and develop projects. You will study the work of performing arts practitioners and learn how to demonstrate practical ideas for performance.

You will also develop transferable skills such as planning, communication and adaptability.

### Post 18 opportunities

This Performing Arts course can lead to a career in journalism, teaching, television broadcasting, the radio and music industry, social work and the theatre profession both as a performer and technician.

#### **Destinations of students who studied Drama:**

Delamare Academy – Make Up and Special Effects

University of Surrey – Theatre and Performance Studies

Tiffany Theatre College – Studying Dance

Bath Spa University – Acting and Technical Theatre Practice

University of Nottingham – Law

### Expenses

Students may be required to purchase set texts or subject related books. During the course there are regular trips to the theatre which will incur costs, but we will support students with financial difficulties.

### Overview

A Level Physics is a fascinating and challenging area of study. You will develop and deepen your knowledge of familiar topics such as electricity, light and motion and be introduced to new areas such as particle physics and quantum world.

*Awarding Organisation:* AQA

*Minimum course requirements:* GCSE Grade 5-5+ in Trilogy Science (Higher Tier) or 5+ in Physics, and GCSE Grade 6 in Mathematics. Students should also study A Level or L3 Maths

*More information:* Miss J Fathers

### Curriculum and assessment

#### YEAR 12

During this year of study, students will gain an excellent basis for future study. We begin by studying all the recent and exciting developments in particle physics and the quantum nature of light. You will then delve deeper into more familiar topics such as electricity, mechanics, materials and waves.

#### YEAR 13

During this year of study, students will develop many of the themes encountered in Year 12. You will begin by studying more advanced mechanics such as circular motion and compare gravitational, electric and magnetic fields. Towards the end of the course, you will further your knowledge of nuclear physics and thermal physics. However, you may specialise for your final unit with a choice of astrophysics, medical physics, applied physics or turning points in physics which will enable you to link into your aspirations for the future.

#### ASSESSMENT

Three 2 hour examinations. Compulsory Practical Endorsement.

### Skills that will be developed

Physics is a practical subject and you will quickly learn how to use a wide range of electrical equipment and how to make accurate and precise measurements. Your numeracy skills will be finally honed and it is expected that you will develop a real appreciation of the meaning of the numbers you are using and applying. You will be required to solve practical and theoretical problems so it is important that you are ready to try out different solutions and be ready to think.

### Post 18 opportunities

Our physicists go on to study a whole variety of courses at university from pure science to applied areas such as Engineering, Telecommunications and Meteorology.

#### Destinations of students in the last two years:

Imperial College – Electrical Engineering

Leicester University – Medicine

Oxford University – Physics

Manchester University – Mechanical Engineering

Cambridge University – Materials Science

Sussex University – Physics with Astrophysics

Lancaster University – Physics

### Expenses

You will need to purchase a text book. We will endeavour to attend at least one series of lectures to supplement the course.



### Overview

This course provides an opportunity for students to study a subject that is new to them and all students will be on an equal footing when they commence. The course looks at UK and US government and politics and the ever changing political landscape we live in, as well as the political ideologies underpinning it. Students will learn about topics such as systems of government, participation and democracy, voting systems, the role of the EU, and devolution, as well the political ideas behind liberalism, conservatism, socialism and nationalism.

*Awarding Organisation:*  
AQA

*Minimum course requirements:*  
GCSE Grade 4+ in English

*More information:*  
Ms A Duncan

### Curriculum and assessment

#### Topics may include:

Paper 1: Government and Politics of the UK

Paper 2: Government and Politics of the USA/Comparative Politics

Paper 3: Political ideas

### Skills that will be developed

- Knowledge and understanding
- Research skills
- Critical thinking
- Analytical and evaluative reasoning
- Political awareness
- Debating skills

### Post 18 opportunities

Students who study this subject gain a contemporary knowledge of the working world. As a subject it is always changing and students need to maintain a grasp on the changes. This course is useful for students pursuing English, History or International Relation courses as well as Journalism and Law.

#### Destinations of students in the last two years:

Nottingham University – Politics and American Studies

Warwick University - Politics, Philosophy and Law

Leicester University - Politics

Nottingham Trent University – International Relations and Politics

Sussex University – Law

### Expenses

Students will need to purchase their text books. There are additional revision booklets that are available if the student wishes to purchase them. The department has a list of these and can provide guidance to students if necessary.

## Overview

Psychology is a captivating and diverse area of study and this course provides a broad basis of study for the applied psychology sector. Designed to support progression to higher education when taken as part of a programme of study that includes other appropriate BTEC Nationals or A Levels.

*Awarding Organisation: Pearson*

*Minimum course requirements:  
5 or more GCSEs Grade 9-4 including English or Mathematics or 4 or more GCSEs Grade 9-4 including 5+ in English and Mathematics*

*More information: Miss J Fathers*

## Curriculum and assessment

### YEAR 12

The content of this qualification has been developed in consultation with academics to ensure that it supports progression to higher education. The qualification provides the knowledge, understanding and skills that will prepare you for further study or training.

Everyone taking this qualification will study three mandatory units, covering the following content areas:

- applications of psychological approaches
- conducting psychological research
- health psychology (covered in Year 13)

### YEAR 13

You will choose one optional unit, which has been designed to support progression to more specialist applied psychology courses in higher education and to link with relevant occupational areas, such as:

- criminal and forensic psychology
- principles of children's psychological development
- psychopathology and treatment
- applied sport psychology.

This will allow you to choose a specific specialist area in which you wish to develop your knowledge and skills.

**ASSESSMENT:** Four units of which three are mandatory and two are external.  
Mandatory content (83%) External assessment (58%)

## Skills that will be developed

- The ability and motivation to work independently
- Good note taking and essay writing skills
- Good powers of analysis
- The ability to think critically
- The ability to express complex ideas in your own words

## Post 18 opportunities

The Pearson BTEC Level 3 National Extended Certificate in Applied Psychology, which is 360 GLH, is intended to be an Applied General qualification for post-16 learners wanting to continue their education through applied learning, and who aim to progress to higher education and ultimately to employment, possibly in the applied psychology sector. The qualification is equivalent in size to one A Level and it has been designed as one third of a typical study programme, normally alongside A Levels or other applied general qualifications at Level 3.

## Expenses

You will need to purchase a text book. We will endeavour to attend at least one series of lectures to supplement the course.

### Overview

A Level Psychology is a captivating and diverse area of study. You will learn about how humans learn and recall information and how they develop cognitively from babies to adulthood. Social Psychology looks at situations of when and why we conform and obey whilst biopsychology looks into how our anatomy plays a role in driving our behaviour.

*Awarding Organisation: AQA*

*Minimum course requirements:*  
GCSE Grade 4+ in Science or 4-4 in Trilogy Science. GCSE Grade 5+ in English and Mathematics. It is recommended students also study A Level or L3 Maths

*More information: Miss J Fathers*

### Curriculum and assessment

#### YEAR 12

During this year students will gain an excellent basis for future study. You begin by studying memory in cognitive psychology, discover reasons for influence and obedience during social psychology, get an insight into the diagnosis and treatment of mental disorders in psychopathology and also look into infant attachment in developmental psychology. You will also learn how psychologists collect and analyse data. The second unit focuses on the different approaches in psychology to explain behaviour, a closer look at the brain and hormones in biopsychology and continue building on knowledge and application of research methods.

#### YEAR 13

During this year students will develop many of the themes encountered in Year 12. You will look more closely at cognition and development and deepen your knowledge of mental illness by studying schizophrenia in detail. You will also look at forensic psychology including the different ways we can explain offending behaviour. By now you will be able to design your own psychological scientific investigation and debate current theory and conflict of opinion by accessing various psychology issues and debates.

**ASSESSMENT** – Three 2 hour examinations

### Skills that will be developed

- The ability and motivation to work independently
- Good note taking and essay writing skills
- Good powers of analysis
- The ability to think critically
- The ability to express complex ideas in your own words

### Post 18 opportunities

Psychology can help your career either directly or indirectly. Of course, for those who wish to become a Psychologist, therapist or mental health worker, this A Level is of direct value. Studying Psychology provides you with a vast number of options. Just some of the potential career options open to you include: Education, Social Work, Psychology, Advertising, Counselling, the Police Force and many more.

#### Destinations of students in the last two years:

East London University – Forensic Psychology

Nottingham Trent University – Psychology

### Expenses

You will need to purchase a text book. We will endeavour to attend at least one series of lectures to supplement the course.

# Religious Studies

## Overview

This course requires you to have an enquiring mind, an interest and a desire to examine some of the biggest questions in the universe! You do not need a religious belief (though it is fine if you do have one). You will need to be able to read quite challenging texts and write extended essays, take notes, and most importantly be confident to discuss and examine a range of different issues, such as whether there is a God, how we make moral decisions and how Christianity has developed.

*Awarding Organisation:*  
EDUQAS

*Minimum course requirements:*  
GCSE Grade 4+ in English

*More information:*  
Mr G Blunt

## Curriculum and assessment

### YEAR 12 TOPICS INCLUDE:

- The nature of God in Christianity
- Religious morals
- Arguments for and against the existence of God
- The problem of evil
- Religious experiences, such as mysticism
- Christian festivals and ceremonies
- Scientific challenges to religious belief
- Ethical theories including;
  - Utilitarianism
  - Natural Law
  - Situation Ethics
  - Divine Command Theory

### YEAR 13 TOPICS INCLUDE:

- Religious Language
- The Psychology of religious belief
- Atheism and challenges to faith
- Meta-ethics and understanding ethical language
- Determination and Free Will
- The authority of the Bible
- Feminist theology
- Religious experiences, such as miracles
- Religious responses to poverty and injustice

Students will study 3 components; (i) Christianity, (ii) Philosophy and (iii) Ethics.  
Each component is assessed through a 2-hour written exam at the end of Y13.

## Post 18 opportunities

Religious Studies is widely accepted as an entry qualification for further and Higher Education courses. Therefore, it is particularly helpful for study in any of the Arts and Sciences, with focus on Humanities, Philosophy, Law, Medicine, Healthcare, Social Work, Psychology, Policing and many more.

Studying this course will develop a wide range of skills, including those essential for enquiry, interpretation, critical thinking, evaluation and communication. It is ideal for developing the academic skills needed for degree study or work that includes an Ethical aspect, such as the Law or the Armed Forces.

### Destinations of students in the last two years:

University of Southampton – Philosophy, Politics and Economics

Hertfordshire University – Philosophy

### Overview

*“Neither the life of an individual nor the history of a society can be understood without understanding both.”* (C Wright Mills)

Sociology can be described as the scientific study of society. It is about the social relationships that people share with each other; in their families, in their schools and in work. Sociology teaches that there are no right or wrong answers when it comes to studying the way that people live together. What is important for a sociologist is the ability to evaluate evidence and choose between possible explanations.

*Awarding Organisation:*  
AQA

*Minimum course requirements:*  
GCSE Grade 4+ in English

*More information:*  
Mr K Prior

### Curriculum and assessment

#### YEAR 12

During this year students begin by studying ‘An introduction to Sociology’. In this part of the course they are introduced to some of the major sociological theories and concepts that frequently occur throughout the course. They then study ‘Families and Households’, as well as ‘Education’ and ‘Theory and Methods’.

**ASSESSMENT** – Students will have three 2 hour written examinations on:

Paper 1: Education with Theory and Methods

Paper 2: Topics in Sociology – Families and Households – Beliefs in Society

Paper 3: Crime and Deviance with Theory and Methods

#### YEAR 13

During this year students study ‘Beliefs in Society’. Finally they undertake the study of ‘Crime and Deviance’, together with ‘Theory and Methods’.

### Skills that will be developed

- How to research and evaluate complex arguments
- How to use evidence to support your arguments, both orally and in written work
- How to investigate facts and use deduction
- How to put over your point of view fluently
- How to use, interpret and evaluate a wide range of research techniques
- How to work as a team to achieve results
- How to take responsibility for your own learning
- How to organise your work and meet deadlines

### Post 18 opportunities

Many students of Sociology go on to study not only Sociology at university, but also a range of other courses such as law, journalism, and social policy. The subject helps develop a range of excellent academic skills, from independent research to detailed analysis of evidence, that will prepare you for many university courses and careers.

### Expenses

Students are expected to purchase the following key textbooks:

AQA A Level Sociology: Book One and Book Two by Webb, Westergaard, Trobe and Townend (Napier Press)



### Overview

The aim of this course is to equip students with the confidence to effectively communicate (both in spoken and written forms) and develop a thorough understanding of the culture of countries and communities where Spanish is spoken. It also provides a stepping stone for university courses in Spanish and/or Hispanic Studies. It develops an interest in, and enthusiasm for, language learning and encourages students to consider their study of Spanish in a broader context.

*Awarding Organisation:*  
AQA

*Minimum course requirements:*  
GCSE Grade 5+ in Spanish (Higher Tier)

*More information:*  
Miss L Hurst

### Curriculum and assessment

#### TOPICS UNDER CONSIDERATION FOR STUDY

- Aspects of Hispanic society
- Artistic culture in the Hispanic world
- Multiculturalism in Hispanic society
- Aspects of political life in Hispanic society
- One Spanish language text
- One Spanish language film
- Grammar

There is also an individual research project.

#### AIMS

Spanish A Level aims to encourage students:

- To develop the ability to comprehend Spanish in a wide range of contexts
- To enable the student to communicate confidently and clearly in Spanish for a variety of purposes
- To form a sound base of skills, language and attitudes required for further study, work and leisure
- To develop useful knowledge of, and insights into, past and contemporary Spanish-speaking culture
- To encourage positive attitudes to, and a lasting appreciation of, language learning
- To further intellectual and personal development by promoting learning and social skills
- To gain valuable skills for foreign travel, further education and employment

#### ASSESSMENT

Students are assessed in listening, reading and writing (as one paper), another writing paper (film/literature essay) and speaking (which includes an individual research project) at the end of Year 13.

### Post 18 opportunities

As well as allowing candidates to develop their language skills, the course will foster an awareness of Spanish culture and history. In addition to providing a secure foundation for study in higher education, the course equips candidates with a range of skills for careers in business, education and the arts.

#### Destinations of students in the last two years:

UCL – French and Spanish

### Expenses

Students will be expected to purchase their own textbook and grammar book. It is also expected that they will purchase a good quality Spanish to English dictionary.

### Overview

Sport is a growing multi-billion pound industry with many diverse careers in performance, coaching and leadership, development and use of science and the media. This applied qualification will give learners the opportunity to study many of these areas at an advanced level in preparation for further education or the workplace.

*Awarding Organisation:* Pearson

*Minimum course requirements:* GCSE Grade 4 in Biology or 4-4 in Trilogy Science. Must be involved in facilitating competitive sport(s). Eligibility to be discussed with Curriculum Leader.

*More information:* Mr N Morris

### Curriculum and assessment

#### YEAR 12

##### Mandatory units include:

- Anatomy and Physiology
- Fitness training and programming for health, sport and well-being
- Investigating business in sport and the leisure industry

#### YEAR 13

##### Mandatory units include:

- Anatomy and Physiology
- Application of fitness training, including the evaluation of validity and application of testing.

#### ASSESSMENT

Internal assessment: 2 units 25% each. Industry linked tasks. Students build a portfolio of work which is internally assessed and externally moderated.

External assessment: 2 units 25% each. Written exam in both units. Externally assessed.

### Post 18 opportunities

This is aimed at learners who want academic experience and who are aspiring to university. Students will finish the course with a solid foundation to take up work in the sport sector.

### Expenses

Students are required to purchase text books.

# GCSE Level

## English

GCSE English Language equips students with the skills required to read, understand and analyse a wide range of texts, as well as providing students with the opportunity to produce imaginative, creative and technically accurate pieces of writing for a variety of different purposes. An essential prerequisite to A-Levels and other Level 3 courses, the AQA GCSE English Language specification will challenge, motivate and enable students to achieve their career ambitions.

## Curriculum and assessment

### UNIT 1 –

#### Explorations in Creative Reading and Writing (50%)

##### Section A – Reading

Students will be required to read, understand, analyse and evaluate different 19th Century literary texts.

##### Section B – Writing

Students will study narrative and descriptive writing.

*Students will be assessed through a 1 hour 45 minute examination paper at the end of the course.*

### UNIT 2 –

#### Writers' Viewpoints and Perspectives (50%)

##### Section A – Reading

Students will be required to read, understand, analyse, evaluate and compare literary non-fiction texts from different centuries.

##### Section B – Writing

Students will study discursive writing.

*Students will be assessed through a 1 hour 45 minute exam paper at the end of the course.*

### UNIT 3 –

#### Spoken Language Assessment

Students are required to complete a presentation in front of an audience. This is a compulsory element of the course, however it does not contribute to the student's final GCSE grade. Students will be awarded a separate certificate for this aspect of the course from the examination body.

*Awarding Organisation: AQA*

*More information: Mrs M Grantham*

## Mathematics

All students will be expected to retake GCSE Mathematics if they do not already have a Grade 4.

## Curriculum and assessment

### CURRICULUM

- Number
- Algebra
- Ratio
- Geometry
- Statistics
- Probability

There is an increased emphasis on functional mathematics with up to 40% of each paper focusing on applying mathematics to real-life situations.

### ASSESSMENT

Paper 1 – non calculator  
*1 hour 30 minutes*

Paper 2 – calculator  
*1 hour 30 minutes*

Paper 3 – calculator  
*1 hour 30 minutes*

All students will be put forward for the Foundation Tier examination with opportunities to re-sit in November and May/June of each year (subject to teacher judgement).

## Expenses

An appropriate scientific calculator is essential. Revision materials will be available to purchase.

*Awarding Organisation: AQA*

*More information: Mr W Dineley*

# Destinations 2020

## A Level Examination Results 2020

A\*-A Grades: 38%

A\*-B Grades: 66%

A\*-C Grades: 89%

Overall pass rate: 100%

## Student Destinations

We are extremely proud of the success achieved by all of our students. The table below shows some of the destinations and courses our students went on to after Highdown Sixth Form. 74% of our Year 13 students last summer applied and successfully gained places to study at University (100% of applicants). Of these 29 gained places at Russell Group (40% of UCAS applicants, 30% of Year group). Four of our Year 13 students have gone on to FE courses and four have gone on to Apprenticeships in Accounting or Health Care, for example.

INSTITUTION	COURSE
<b>ACM (The Academy of Contemporary Music)</b>	Creative Artistry
<b>Bath</b>	Modern Languages (French Advanced & Italian Beginner)
<b>Bath Spa</b>	Creative Music Technology
<b>Birmingham</b>	Biomedical Science Computer Science English and History Mathematics Mathematics and Computer Science with Industrial Year
<b>Bournemouth</b>	Business Information Technology
<b>Bristol</b>	Dentistry – BDS entry (5 years)
<b>Brunel</b>	Industrial Design and Technology with Placement
<b>Cambridge</b>	Anglo-Saxon, Norse, and Celtic
<b>Cardiff</b>	Computer Science Environmental Geography Pharmacy
<b>Cardiff Metropolitan</b>	Fine Art
<b>Central Lancashire</b>	Asia Pacific Studies – Japanese
<b>City, University of London</b>	Business Management
<b>East Anglia</b>	Medicine with a Gateway Year
<b>Edge Hill</b>	Computer Science

INSTITUTION	COURSE
<b>Exeter</b>	English Maths Politics, Philosophy and Economics Psychology
<b>Gloucestershire</b>	Criminology Physical Education
<b>Greenwich</b>	Children's Nursing
<b>King's College London</b>	History and Modern Languages Medicine
<b>Kingston</b>	Foundation Art Diploma
<b>Leeds</b>	Civil Engineering
<b>Leicester</b>	Law
<b>London School of Economics and Political Science</b>	Actuarial Science
<b>Manchester</b>	Biology Psychology
<b>Newcastle</b>	Mathematics
<b>Nottingham</b>	Science with Foundation Year History and Politics
<b>Nottingham Trent</b>	Fashion Design Law with Psychology
<b>Oxford Brookes</b>	Computer Science
<b>Plymouth</b>	Biomedical Science
<b>Portsmouth</b>	Economics Marketing Biomedical Science Business and Management
<b>Reading</b>	History Biomedical Sciences Modern Languages Accounting and Management Primary Education Geography (Physical) with Professional Experience Applied Psychology (Clinical)
<b>Sheffield</b>	Journalism Studies
<b>Southampton</b>	Psychology
<b>St Andrews</b>	Marine Biology
<b>St Mary's</b>	Sport Rehabilitation
<b>Sussex</b>	Criminology
<b>Warwick</b>	History and Politics
<b>West of England</b>	Audio and Music Technology Psychology
<b>Winchester</b>	Criminology English with American Literature Forensic Investigative Psychology Primary Education with QTS
<b>York</b>	History





***“Sixth form students enjoy being members of the school and the sixth form is as inclusive as the rest of the school. Students have high aspirations for their futures.”*** [Ofsted 2015]



## HIGHDOWN SCHOOL AND SIXTH FORM CENTRE

Surley Row, Emmer Green, Reading RG4 8LR

Telephone: 0118 9015800

Sixth Form Enquiries: [sixthformadmissions@highdown.reading.sch.uk](mailto:sixthformadmissions@highdown.reading.sch.uk)

@HighdownSchool @Highdown6thForm [www.highdown.reading.sch.uk](http://www.highdown.reading.sch.uk)

