

Creative Youth Assembly

SEN Youth Theatre Made Differently

Weekly creative workshops exploring drama and dance for young people aged 11-25 with autism and/or learning disabilities.



Thursdays

Half Assembly – 6.15pm – 7.15pm

Full Assembly – 6.15pm – 8.15pm

Located at

The Avenue School, Conwy Close, Tilehurst, Reading, RG30 4BZ

Paid half-termly in advance – bursaries available.

Saturdays

Half Assembly – 10am – 12pm

Full Assembly – 10am – 1pm

Located at

Reading Rep Theatre, Kings Road, Reading, RG1 4LY

Paid half-termly in advance – bursaries available.

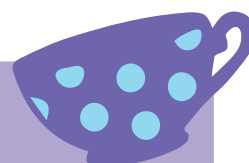
SIGN UP NOW!

Free trial sessions start on Thursday the 13th and Saturday the 15th of January!
To book on, please contact team@makesensetheatre.com

Rehearsals start in February for

Alice in Wonderland

To be performed at Reading Rep Theatre in
July 2022



**READING
REP
THEATRE**

"A super inclusive theatre group that provides a safe place for our special children to express themselves without judgement. The team are amazing, energetic, passionate and truly committed in supporting all young people in realising their dreams."

– Jo, Parent of CYA attendee

make/sense
THEATRE