



Highdown School and Sixth Form Centre

OPTIONS BOOKLET

FOR COURSES STARTING IN SEPTEMBER 2024

CLASS OF 2021-2026



ASPIRATION RESPECT EXCELLENCE

Table of Contents

Letter to Parents and Students	Pg. 3
Introduction	Pg. 4
Study Programme Information	Pg. 5
GCSE English Language (CORE)	Pg. 9
GCSE English Literature (CORE)	Pg. 10
GCSE Maths (CORE)	Pg. 11
GCSE Science (CORE)	Pg. 12
PSHCE (CORE)	Pg. 13
Physical Education/Games (CORE)	Pg. 14
GCSE Art	Pg. 15
GCSE Art Graphics	Pg. 16
GCSE Art Photography	Pg. 17
GCSE Art Textiles	Pg. 18
GCSE Business	Pg. 19
GCSE Citizenship Studies	Pg. 20
GCSE Computer Science	Pg. 21
Cambridge Level 1/2 Creative iMedia (ICT)	Pg. 22
GCSE Design and Technology	Pg. 23
GCSE Drama	Pg. 24
GCSE Economics	Pg. 25
GCSE Food Preparation and Nutrition	Pg. 26
GCSE Geography	Pg. 27
VTCT Level 1/2 Hair and Beauty	Pg. 28
GCSE History	Pg. 29
MFL – GCSE French	Pg. 30
MFL – GCSE Mandarin	Pg. 31
MFL – GCSE Spanish	Pg. 32
GCSE Music	Pg. 33
GCSE Music Technology	Pg. 34
GCSE Physical Education	Pg. 35
GCSE Religious Studies	Pg. 36
Cambridge Level 2 Sports Studies	Pg. 37
GCSE Statistics	Pg. 38

Letter to Parents and Students



Headteacher:
Rachel Cave
BSc. NPQH

HIGHDOWN SCHOOL AND SIXTH FORM CENTRE

Surley Row • Emmer Green • Reading • RG4 8LR

Tel: 0118 901 5800

E-mail: office@highdown.reading.sch.uk



ASPIRATION



RESPECT



EXCELLENCE

Dear Parents and Students

At Highdown School & Sixth Form Centre our core value is the way in which we work together to ensure our students reach their full potential and maximise their success. This booklet is designed to provide the necessary guidance at this important time in the student's academic career to help select the best subject/qualification combinations for further study.

Since joining Highdown, students have followed a broad range of subjects. After Year 9, students will study a smaller number of subjects in order to take GCSEs or other qualifications in the summer of 2026.

It is therefore time to consider all the subjects' students currently study and decide on the best options for them in September 2024. Highdown staff will guide students to the most suitable study programme based on analysis of data and appropriateness for each individual student. We will of course discuss the study programme with both students and parents if they are interested in a different programme or have questions. Each student will follow a study programme (combination of subjects) which meets their needs and will give them the best opportunity to succeed.

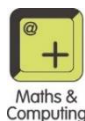
Please read this booklet carefully together and discuss the recommended study programme and combinations of subjects on offer. A timeline is provided to illustrate dates by which decisions should be made. Please do not hesitate to contact Mr Franks, Miss Robinson, or Mr Reid if you have any questions.

It is worth stressing that the decisions made now are very important as the subjects chosen will be studied for a further two years and will have an impact on the options available to students after Year 11. Each study programme provides progression to post 16 education and/or training. Ensure you take time to speak to staff, including subject teachers and mentors, and ask as many questions as you need so that you can confidently make the correct choices.

The first section of this booklet provides guidance on the most appropriate study programme and how to choose your option subjects. The second section then provides some details about the option subjects in order to help you make your selection. Please ask as many questions as you need and remember that Highdown staff are here to help.

Mr Andrew Franks
Assistant Headteacher
(KS3 Aspiration, Respect and Excellence Lead)

Miss Beth Robinson
Interim Head of Achievement Year 9





INTRODUCTION

OUR VISION

We are committed to ensuring that every Highdown student will experience a broad, balanced and inclusive curriculum and will follow a personalised combination of courses, subjects and qualifications, which will best meet their needs and in which they can maximise their success, enabling progression to further education or training. Our curriculum aims to develop successful, confident, independent, responsible and resilient young people who are well prepared for, and progress on to, further and higher education and/or employment.

Options Timetable

DATE	EVENT
Thursday 4th January	Student Assembly
Week commencing Monday 8th January	Virtual Options Parents Presentation
Thursday 11th January	Year 9 Subject Evening
Week commencing Monday 15th January	SIMs Online Options Form released
Friday 2nd February	SIMs Online Options Form deadline
Term 6	Subject choices will be finalised as soon as is possible

Contact details

Miss B Robinson, interim Head of Achievement, Year 9

berobinson@highdown.reading.sch.uk

Mr A Franks, Assistant Headteacher (Year 9, Options and Careers Lead)

haf@highdown.reading.sch.uk

Mr J Reid, Deputy Headteacher
hjr@highdown.reading.sch.uk



KEY STAGE 4 STUDY PROGRAMMES

At Highdown School and Sixth Form Centre we offer three Study Programmes through Years 10 and 11. A **Study Programme** refers to a combination of subjects and qualifications that a student will study in addition to the Core Curriculum.

The **Core Curriculum** includes GCSE English Language, GCSE English Literature, GCSE Mathematics, GCSEs in Science and the study of non-GCSE courses in Physical Education and PSHCE. All students will study the Core Curriculum.

It is our belief that students should study certain subjects in order to ensure a broad and balanced curriculum and the majority of students will study a humanity (Geography or History) or a language. These subjects ensure further development of key literacy, data handling, explanation, analysis and evaluation skills. Such skills are essential for both further education and to improve employability, in addition to complementing all courses at Key Stage 4.

We will recommend a Study Programme, communicated via email to parents and students, which we feel will provide the best opportunity for success and for progression post-16.

We strongly recommend a broad and balanced curriculum is taken by all students and will meet students whom we feel have chosen subjects that provide a curriculum that is too narrow. All study programmes lead to well-established and recognised qualifications. There are two types of qualifications taught at Highdown School and Sixth Form Centre, GCSEs and Level 1/2 technical (applied) courses.

EBacc Programme	Main Programme	Technical Programme
Students will select GCSEs in both a humanity and a language in addition to two other GCSE subjects.	Students will select a GCSE in either a humanity or a language in addition to three other GCSE subjects.	Students will select a GCSE in either a humanity or a language and one Technical subject in addition to two other GCSE subjects.



KEY STAGE 4 STUDY PROGRAMMES CONTINUED

The **EBacc (English Baccalaureate)** refers to the study of English, Mathematics, Science, a humanity (Geography or History) and a language at GCSE. The English Baccalaureate includes academic subjects highly valued by the Russell Group (the leading universities in the UK), but it is not required for entry to any Russell Group university. However, a study by the UCL Institute of Education shows that studying subjects included in the EBacc provides students with greater opportunities in further education and increases the likelihood that a pupil will stay on in full-time education.

The **Technical Programme** is designed for students who will benefit from a more practical and ongoing form of assessment. Students will gain a range of personal, social and employability skills through learning in different applied contexts.

Qualifications and assessment

GCSEs are graded 9-1 with Grade 5 being considered a strong pass and Grade 4 being a standard pass. A Grade 5 is equivalent to a high C/low B and Grade 9 would be a very high A* using the pre-2017 system.

Level 1/2 Technical subjects are equivalent to GCSEs, and focus on acquiring knowledge, understanding and skills through practical, work-related activities in a real-life context. Unlike GCSE, assessment is mainly through portfolio-based assessment, which is externally moderated. They also have exams at the end of Year 11.

Technical qualifications have a proven track record of supporting students into further education, apprenticeships and employment. The Department of Education recognises the importance of applied education as it provides students invaluable opportunities to develop their potential. Indeed, they recognise up to three Technical Awards in school performance measures. Technical Awards are rigorous and challenging courses but how they are assessed will help ensure students are successful in these, enabling them to progress to post-16 education or training. Level 1/2 qualifications are graded using Distinction, Merit, Pass and Fail.



ASPIRATION RESPECT EXCELLENCE

KEY STAGE 4 STUDY PROGRAMMES CONTINUED

Choices

In September students will begin subjects which they will study for two years, leading to GCSE or equivalent qualifications. The choices they make now can have an effect on the routes/options that are open to them in the future in terms of education, training and employment.

To give everyone the widest possible choice, Highdown School and Sixth Form Centre offers over twenty subjects in Years 10 and 11. It would be impossible to study this number of subjects all at once, so students have to make some choices.

Some subjects will be new to students and students interested in one of these courses should speak to the Curriculum Leader or one of the subject teachers to find out more before making any choices. Curriculum leaders have also made short presentations about the subjects that they offer to support students making their choices. These presentations can be found on the school website:

<https://www.highdown.reading.sch.uk/year-9-options>

Students need to choose subjects carefully, bearing in mind:

- which subjects they like.
- which subjects they are likely to do well at.
- the sort of job they would like to do in the future.
- which subjects will help them achieve in Year 11 enabling them to progress to post-16 education or training.

Advice and Guidance

Students should talk about their choices with their family and can also ask older siblings/friends for advice. In school, students should talk to their subject teachers, who will give the best advice about each subject. Mentors (tutors) will give general advice, but if students are not sure how the system works, or which subjects combine together, Mr Franks, Miss Robinson, or Mr Reid are here to support.

- Students can also access careers advice and resources via the school website:

<https://www.highdown.reading.sch.uk/careers>

- The adviza website is also very useful. Once on the website students should follow the link for young people. www.adviza.org.uk



ASPIRATION RESPECT EXCELLENCE



KEY STAGE 4 STUDY PROGRAMMES CONTINUED

Will students get what they ask for?

We will do our best to ensure that students get their first preferences. However, this is not always possible in an open option system due to student uptake of subjects. In the past most students have got their first preferences, but as we cannot guarantee this, **serious thought must be given to both reserve choices.**

There are some combinations of subjects that may not be studied together, which are listed on the options form. These are established to ensure a breadth of curriculum is studied. If a course is oversubscribed the following criteria would be used to assign places.

- **Meeting options form deadlines.**
- **Order of preference of subjects chosen (including reserve choices)**
- **Ready to Learn grades.**
- **Evidence of commitment to the subject both in lessons and beyond the classroom.**
- **Possible career path.**
- **Teacher recommendation.**

If courses are undersubscribed, they will be withdrawn from our offer

After students have completed their options forms if their chosen options do not fit, or if there is some other reason why students should change them, we will talk with them to discuss their preferences.

Can students change their mind later? No, because every subject starts a two-year course in September; if they start a new course later, they will have a lot of very difficult catching up to do. That is why it is important to think hard about the choices now.

Finally, staff at school have huge experience in guiding students and have access to lots of data that can help in making decisions. To be challenged by our studies is a positive thing and promotes aspiration. With this in mind, we will encourage students to take pathways and options that are most suitable for these benefits.



Core Curriculum

ENGLISH

LANGUAGE



Qualification Level:

GCSE

Examination Board:

AQA

Syllabus Reference:

8700

Contacts for further information:

Ms N Salmon
(Curriculum Leader)
hns@highdown.reading.sch.uk

Miss E Myers(KS4 Lead)
esmyers@highdown.reading.sch.uk

Brief Course Description:

GCSE English Language teaches students to write and read fluently and effectively fiction and non-fiction texts. The AQA specification allows students to become confident communicators, develop their empathy, and delve deep into their imagination.

Assessment for these qualifications is by: 100% Exam

- Paper 1: Explorations in Creative Reading and Writing (1hr 45mins) 50% of grade
- Paper 2: Writers' viewpoints and perspectives (1hr 45mins) 50% of grade
- Spoken Language Assessment. Compulsory but does not count towards final grade.

Post-16 Options:

Highdown offers A Level English Language and Literature or English Literature. Students need a Grade 5+ in English Language and Literature. A Grade 5+ can support accessing any extended writing subjects such as History or Sociology.

Degree Options:

- English Language
- English Language and Communication
- English and Media
- English Literature
- Linguistics

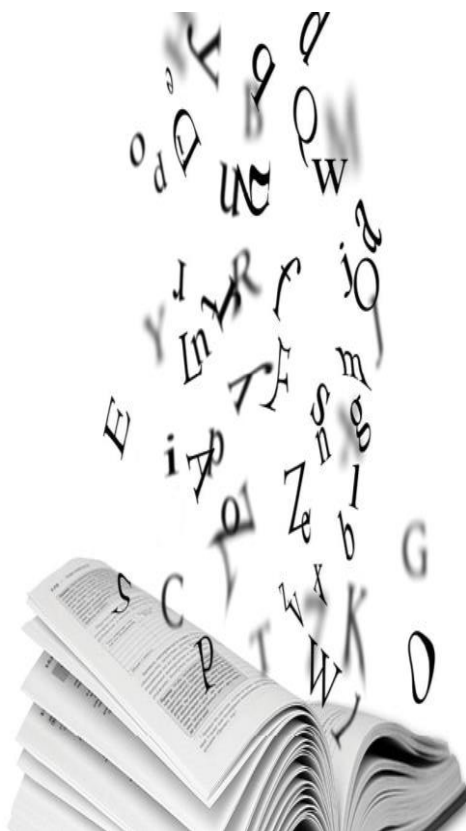
Apprenticeship & Career Options:

- Public Relations Assistant
- Digital Marketer
- Journalism
- Editing
- Marketing
- Advertising
- Teaching
- Law



Core Curriculum

ENGLISH LITERATURE



Brief Course Description:

GCSE English Literature allows students to develop an understanding of a range of literature texts across a range of different genres and periods. Through this course, students will develop their ability to articulate their opinions and ideas, as well as developing their empathy for those around them.

Assessment for these qualifications is by:
100% Exam

- Paper 1: Shakespeare and 19th Century Novel (1hr 45mins) 40% of grade
- Paper 2: Play, Poetry Anthology and Unseen Poetry (1hr 45mins) 60% of grade

Post-16 Options:

Highdown offers A Level English Language and Literature or English Literature. Students need a Grade 5+ in English Language and Literature. A Grade 5+ can support accessing any extended writing subjects such as History or Sociology.

Degree Options:

- English Literature
- Classics
- Cultural Studies
- Law
- English Language and Literature

Apprenticeship & Career Options:

- Law
- Public Relations
- Digital Marketer
- Journalism
- Editing
- Marketing
- Advertising
- Teaching

Qualification Level:

GCSE

Examination Board:

AQA

Syllabus Reference:

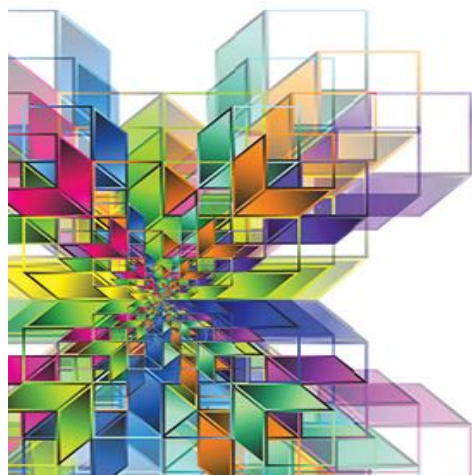
8702

Contacts for further information:

Ms N Salmon
(Curriculum Leader)
hns@highdown.reading.sch.uk

Miss E Myers(KS4 Lead)
esmyers@highdown.reading.sch.uk



**Qualification Level:**

GCSE

Examination Board:

AQA

Syllabus Reference:

8300

Contacts for further information: Mr W Dineley (Curriculum Leader)

widineley@highdown.reading.sch.uk

Mr R Larsen (KS4 Lead)

rilarsen@highdown.reading.sch.uk

Brief Course Description:

Maths is for everyone. It is diverse, engaging and essential in equipping students with the right skills to reach their future destination, whatever that may be. This qualification is designed to support and enable students to engage with, explore, enjoy and succeed in maths. By putting students at the heart of everything we do, our aim is to shape what success in maths looks like for every student.

Assessment for these qualifications is by: 100% Examination.

GCSE Mathematics has a Foundation tier (grades 1 – 5) and a Higher tier (grades 4 – 9).

- Paper 1 (non-calculator). 1 hour 30 mins. 33% of overall grade
- Paper 2 (calculator). 1 hour 30 mins. 33% of overall grade
- Paper 3 (calculator). 1 hour 30 mins. 33% of overall grade

Post-16 Options:

Highdown offers a wide range of A Levels in Maths and related subjects.

- A Level Mathematics (Students need a 7+ in Maths)
- A Level Further Maths (Students need a 8+ in GCSE Maths)
- Level 3 (Core) Mathematics (Students need a 4+ in Maths)

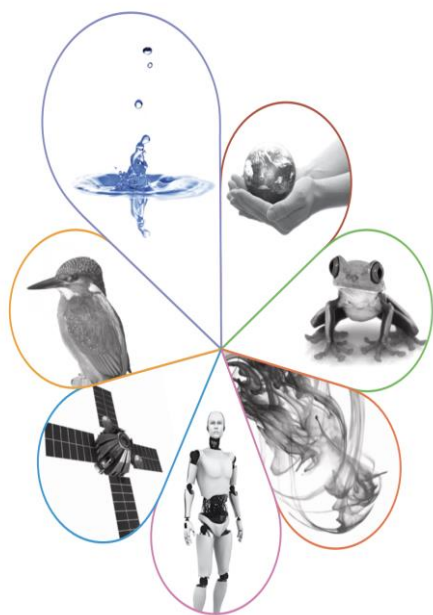
Degree Options:

- Mathematics
- Applied Mathematics
- Pure Mathematics
- Physics
- Chemistry
- Business

Apprenticeship & Career Options:

- Accountancy
- Business Administration
- Teaching
- Public Service





Qualification Level:
GCSE

Examination Board:
AQA

Syllabus Reference:

Combined Science
Trilogy: 8464

Biology: 8461

Chemistry: 8462

Physics: 8463

Contacts for further information:

Ms M Elliot
(Curriculum Leader)
mae@highdown.reading.sch.uk

Ms D Arrington (KS4 Lead)

dearrington@highdown.reading.sch.uk

Brief Course Description:

The GCSE course is started by all students in Year 9. All students divide their time equally between the three disciplines of Biology, Chemistry and Physics.

For examination in year 11 we have two Science routes: -

1. GCSE Biology, GCSE Chemistry and GCSE Physics - students must take all three separate examinations.
2. GCSE Combined Science (Trilogy) - students follow most of the same courses in Biology, Chemistry and Physics but take shorter examinations leading to GCSE Combined Science.

Both Science routes allow access to A Level in any of the Science disciplines.

Assessment for these qualifications is by:
100% Examination

All students will sit 6 exam papers (2 for each science)

- Combined Science (Trilogy) Papers are 1-hour 15minutes each.
- Separate Science papers are all 1 hour 45 minutes each.

Post-16 Options:

All three separate sciences and Psychology are offered at A Level at Highdown.

- Biology: Grade 6-5+ in Trilogy, or 5+ in Biology and Maths
- Chemistry: Grade 6-5+ in trilogy, or 5+ in Chemistry and Maths
- Physics: 6-5+ in trilogy, or 5+ in Physics and 6+ in Maths
- Psychology: Grade 4-4+ in trilogy, or Grade 4+ in Science. Grade 4+ in English and Maths.

Degree Options:

- Medicine
- Forensic Science
- Healthcare

Apprenticeship & Careers Options:

- Anaesthetist
- Oceanographer
- Criminologist
- Nurse



**Qualification Level:**

No qualification

Examination Board:

No exam

Syllabus Reference:

NA

Contacts for further information:Mr M Hampson
(PSHCE Lead)mihampson@highdown.reading.sch.uk**Brief Course Description:**

As part of your child's education at Highdown School we promote personal wellbeing and development through a comprehensive **Personal, Social, Health, Citizenship and Economic** (PSHCE) Education through Character, Culture, and Citizenship (CCC) lessons. The PSHCE programme gives young people the knowledge, understanding, attitudes and practical skills to live safe, healthy, productive lives and meet their full potential.

The PSHCE programme is taught as a timetabled lesson throughout the school in every year group. All PSHCE teaching takes place in a safe learning environment and is underpinned by our school ethos and values.

What will I study?

- | | |
|--|---|
| › Addressing extremism and radicalisation | › extremism |
| › Application processes, and skills for further education, employment and career progression | › Families |
| › Building for the future | › Financial decision making |
| › Communication in and out of relationships | › Healthy Relationships |
| › Communities, belonging and challenging | › Mental health and ill health, |
| | › Personal values, assertive communication |
| | › Responsible health choices |
| | › The influence and impact of drugs, gangs, role models and the media |



PHYSICAL EDUCATION/ GAMES



Qualification Level:

No qualification

Examination Board:

No exam

Syllabus Reference:

NA

Contacts for further information:

Dr T Browne
(Curriculum Leader)
tobrowne@highdown.reading.sch.uk

Brief Course Description:

Regular physical activity is essential for lifelong health and fitness. Physical Education, a core subject, will build on skills learnt in previous years. The curriculum, boasting a diverse range of activities, will inspire you to succeed and excel in competitive situations and other physically demanding activities. Physical Education helps to embed values such as fairness and respect, and you will leave Highdown School with a sound understanding of how to maintain your health and fitness.

What will I study?

Highdown offers an outstanding range of activities within a bespoke pathway of activities across the entire academic year. At the start of the year, you will choose favoured sports in each block of work, building your own timetable. Over 20 sports are on offer, ranging from traditional team games such as rugby, hockey and football, individual sports such as tennis, badminton and trampolining as well as the option to complete a nationally recognised qualification in sports leadership skills. Students can even look at less familiar sports such as golf, dodgeball and bench ball.

There will also be several tournaments during the year in a range of sports:

- | | |
|----------------|----------------|
| • Dodgeball | • Netball |
| • Wedgeball | • Football |
| • Rock-it-ball | • Table tennis |
| • Wallball | • Badminton |
| • Frisbee | • Softball |
| • Water polo | • Rounders |



**Qualification Level:**

GCSE

Examination Board:

AQA

Syllabus Reference:

8201

Contacts for further information:

Ms E Garner
(Curriculum Leader)
elgarner@highdown.reading.sch.uk

Brief Course Description:

Our approach to Art will introduce you to a variety of themes, materials and techniques and will help build on those already gained in Key Stage 3. The course will provide you with the skills to communicate ideas and will develop your ability to investigate, analyse and experiment.

What will I study?

The course begins with a teacher-led project introducing a variety of materials and processes such as drawing, printmaking, painting, photography, mixed media and ceramics. As the course progresses, you will be able to follow a more individual programme. This will be developed through tutorials with your teacher and will be based around your strengths and interests. A variety of artists, designers and crafts people will be studied. These will be both contemporary and from other times and cultures working within varied fields.

In your GCSE you will study a variety of themes.

Assessment for these qualifications is by:

- 60% NEA (Coursework)
- 40% Exam unit (10 Hour Exam)

Post-16 Options:

Highdown offers A Level Art, Photography and textiles. Students need a Grade 4+ in the relevant subject. Portfolio work can also be assessed if you do not have a grade in the subject.

Degree Options:

- | | |
|------------------|------------------|
| • Graphic Design | • Advertising |
| • Comic Art | • Set Design |
| • Costume Design | • Theatre Design |

Apprenticeship & Career Options:

- | | |
|-----------------------------|------------|
| • Community Arts | • Designer |
| • Cultural Learning Officer | |



**Qualification Level:**

GCSE

Examination Board:

AQA

Syllabus Reference:

8203

Contacts for further information:

Ms E Garner
(Curriculum Leader)
elgarner@highdown.reading.sch.uk

Brief Course Description:

If you like to create artwork to a set brief and in a more two-dimensional way, you should consider this course. Students will have the opportunity to use their own ideas and interests as part of their design work. They will also use art skills such as layout, design and typography.

What will I study?

You will be taught constructed and freehand drawing, as well as rendering and presentation skills. It involves you working with the design process, with a strong emphasis on creating your own original artwork from research of artists and designers, also experimenting with different materials and techniques.

Assessment for these qualifications is by:

- 60% NEA (Coursework)
- 40% Exam unit (10 Hour Exam)

Post-16 Options:

Highdown offers A Level Art, Photography and textiles. Students need a Grade 4+ in the relevant subject. Portfolio work can also be assessed if you do not have a Grade in the subject.

Degree Options:

- | | |
|------------------|------------------|
| • Graphic Design | • Advertising |
| • Comic Art | • Set Design |
| • Costume Design | • Theatre Design |

Apprenticeship & Career Options:

- | | |
|---------------------|------------|
| • Community Arts | • Officer |
| • Cultural Learning | • Designer |



**Qualification Level:**

GCSE

Examination Board:

AQA

Syllabus Reference:

8206

Contacts for further information:

Ms E Garner
(Curriculum Leader)
elgarner@highdown.reading.sch.uk

Brief Course Description:

Photography is an exciting and creative subject. The course requires students to be artistic, open minded and well organised individuals, which are crucial qualities for those who wish to pursue a career in Photography or the arts.

What will I study?

You will be introduced to a variety of modern and traditional techniques and processes, digital photography, lighting and Photoshop manipulation. You will study the work of other photographers, understand what makes for a good photograph and be able to create your own.

Assessment for these qualifications is by:

- 60% NEA (Coursework)
- 40% Exam unit (10 Hour Exam)

Post-16 Options:

Highdown offers A Level Art, Photography and textiles. Students need a Grade 4+ in the relevant subject. Portfolio work can also be assessed if you do not have a Grade in the subject.

Degree Options:

- | | |
|------------------|------------------|
| • Graphic Design | • Advertising |
| • Comic Art | • Set Design |
| • Costume Design | • Theatre Design |

Apprenticeship & Career Options:

- | | |
|---------------------|------------|
| • Community Arts | • Officer |
| • Cultural Learning | • Designer |





Textile design focuses on a variety of different journeys and outcomes. Pieces can vary from having functional or non-functional purposes. You will look at weaving, knitting, stitching, dying fabrics, printing methods both digitally and through other manual mediums. During the course, you will have the opportunity to explore art textiles, fashion design and illustration, costume design, constructed textiles, printed and dyed textiles, surface pattern, stitched and/or embellished textiles, soft furnishings and/or textiles for interiors, digital textiles & installed textiles. You will also look at a variety of different designers and artists throughout the course, linking your own ideas with the work of others

What will I study?

During the course, you will have the opportunity to explore, art textiles, fashion design and illustration, costume design, constructed textiles, printed and dyed textiles, surface pattern, stitched and/or embellished textiles, soft furnishings and/or textiles for interiors, digital textiles & installed textiles.

Assessment for these qualifications is by:

- 60% NEA (Portfolio)
- 40% Exam unit (10 Hour Exam)

Post-16 Options:

Highdown offers A Level Fine Art, Photography and Textile Design. Students need a Grade 4+ in the relevant subject. Portfolio work can also be assessed if you do not have a Grade in the subject.

Degree Options:

- | | |
|------------------|------------------|
| • Graphic Design | • Advertising |
| • Comic Art | • Set Design |
| • Costume Design | • Theatre Design |

Apprenticeship & Career Options:

- | | |
|-----------------------------|--------------------|
| • Community Arts | • Fashion Designer |
| • Cultural Learning Officer | • Retail Buyer |
| | • Merchandising |

Qualification Level:

GCSE

Examination Board:

AQA

Syllabus Reference:

8204

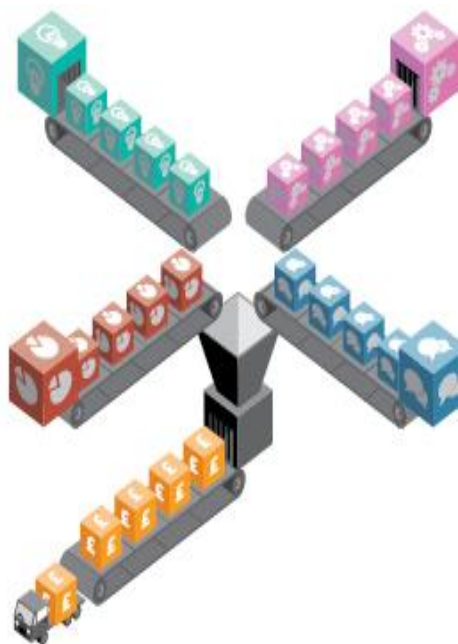
Contacts for further information:

Ms C Lobo

(Curriculum Leader)

hcl@highdown.reading.sch.uk



**Qualification Level:**

GCSE

Examination Board:

AQA

Syllabus Reference:

603/0304/9 GCSE

Business

Contacts for further information:

Mr M Hodges

(Curriculum Leader)

mahodges@highdown.n.reading.sch.uk

Brief Course Description:

The world of business changes day to day; moment to moment; it never stands still; it's exciting! A famous Chief Executive Officer once said, *"If the rate of change on the outside exceeds the rate of change on the inside, the end is near"*. This engaging course will help you understand that business world developing their knowledge over key areas;

Business in the real world

Influences upon businesses

Functional areas of Operations

Marketing

Human Resources

Finance

Assessment for these qualifications is by:

100% Examination

Paper 1 Influences of operations and human resources on business activity. **1 hours 45 minutes**

Paper 2 Influences of marketing and finance on business activity. **1 hours 45 minutes**

Post-16 Options:

Business Studies A Level is offered at Highdown. Students must get a Grade 4+ in English and maths, or Grade 4 in Business Studies at GCSE. If students have a Grade 4 in maths, they must study Level 3 maths alongside Business Studies.

Degree Options:

- Logistics management
- Marketing management
- New media marketing
- Data Analyst
- Business Analyst

Apprenticeship & Career Options:

- Accounting
- Marketing
- Payroll / Operations
- Project management
- Banking





Brief Course Description:

GCSE Citizenship Studies teaches students about a wide variety of issues both locally and globally. Ideas and concepts such as democracy, government, crime & justice, equality and diversity are studied. The course involves students taking citizenship action themselves. This will help them to develop skills in research and enquiry, interpretation of evidence, planning, collaboration, advocacy and campaigning.

Assessment for these qualifications is by:
100% examination

3 Examinations. 50minutes, 1hour 45minutes and 1 hour.

Examinations will include multiple choice questions, short and medium questions both knowledge based and on case study analysis, and longer evaluation questions. The citizenship action unit is part of the examination with questions referring to the project completed so there is no graded coursework element.

Post-16 Options:

Highdown offers A Level Religious Studies. Students require a Grade 4 in either English Language or Literature GCSE. Highdown also offers a range of other supporting subjects, such as Government & Politics or Sociology.

Degree Options:

- Sustainability and Global Citizenship
- Politics
- History
- Geography
- British Studies
- Citizenship Studies
- Philosophy

Apprenticeship & Career Options:

- Aid Worker
- Teacher
- Editor Assistant
- Religious Leader
- Paralegal

Qualification Level:

GCSE

Examination Board:

OCR

Syllabus Reference:

J270

Contacts for further information: Mr M

Hampson

mihampson@highdown.reading.sch.uk



**Qualification Level:**

GCSE

Examination Board:

AQA

Syllabus Reference:

8525

Contacts for further information: Mr D Stephenson
(Curriculum Leader)

hds@highdown.reading.sch.uk

Brief Course Description:

Computing is a challenging EBacc subject which uses mathematics and logic to solve real world problems which could include writing apps for your mobile phone, simulating the experiments you have carried out in the traditional sciences, developing the databases which drive websites such as Facebook or even the school registration system.

The most important aspect of Computer Science is problem solving, an essential skill for life. Students study the design, development and analysis of software and hardware used to solve problems in a variety of business, mathematical, scientific and social contexts. Computer Science is seen as a first step into the many careers offered in the computing industry as well as supporting those looking to move into engineering, physics or other sciences.

Assessment for these qualifications is by: 100% examination

- Paper 1 Computational Thinking and Programming Skills. 1hour 45mins. 50% of overall grade.
- Paper 2 Computing Concepts. 1hour 45mins. 50% of overall grade.

Post-16 Options:

Highdown offers A Level Computing. Students require a Grade 5+ in Computing and Maths. If the student has not studied Computing at GCSE, they require a Grade 6+ in GCSE maths.

Degree Options:

- | | |
|--------------------|---------------|
| • Computer Science | • Computer |
| • Data Analytics | Programming |
| • Cybersecurity | • Coding |
| • Computing | • Game Design |

Apprenticeship & Career Options:

- | | |
|-----------------|------------------|
| • Cybersecurity | Engineering |
| • IT support | • Data Analytics |
| • Network | • Systems IT |



CREATIVE iMEDIA (ICT)



This course is open for all students, although places will be prioritised for students following the Technical Programme.

Brief Course Description:

Creative iMedia aims to equip creative students with the skills to work in the creative and digital media sector. In this highly practical course, you will learn how to build websites, create digital graphics, edit digital video and sound.

In addition to learning the skills needed to create digital media our students will gain an understanding of the pre-production techniques used throughout the creative industries, which are transferrable to a wide range of occupations. As you might expect this course also focuses on developing the soft and problem-solving skills desired by employers. It is also considered a good path towards studying ICT, Media or Web Design as a career and being an excellent support subject for the arts.

Assessment for these qualifications is by:

- R093: Creative iMedia in the industry. Exam 1hr 30mins
- R094: Visual Identity and Digital Graphics. Centre assessed coursework
- R097: Interactive Digital Media. Centre assessed coursework

Post-16 Options:

Highdown offers A Level Computing. Students require a Grade 5+ in Computing and Maths. If the student has not studied Computing at GCSE, they require a Grade 6+ in GCSE maths

Degree Options:

- | | |
|------------------|----------------|
| • Digital Media | • Media and |
| • Creative Media | Communication |
| Production | • Sports Media |
| • Media Studies | |

Apprenticeship & Career Options:

- | | |
|--------------------|---------------|
| • Computer Science | • Coding |
| • Data Analytics | • Game Design |
| • Cybersecurity | |

Qualification Level:

Level 1/2

Examination Board:

OCR

Syllabus Reference:

J834

Contacts for further information: Mr D Stephenson

(Curriculum Leader)

hds@highdown.reading.sch.uk





Qualification Level:

GCSE

Examination Board:

AQA

Syllabus Reference:

8552

Contacts for further information:

Ms C Lobo

(Curriculum Leader)

hcl@highdown.reading.sch.uk

Why study Design and Technology?

This course will encourage you to design and make products with creativity using a range of materials and techniques. The advantage of this course is that you can study and make products with paper/card, timber, metals, plastics, electronics, depending on your choice.

You will become more aware of sustainability and the environmental impact of your designs, the impact of new and emerging technologies and materials and how this influences design and how energy is generated and stored.

The course provides a wide range of learning on topics which aid your understanding of modern design and technological advances. You will look into the functions of mechanical devices, how electronic systems provide functionality to products and processes, the use of programmable components to embed functionality into products.

Assessment for these qualifications is by:

- Written Examination on core knowledge of D&T and questions on your chosen materials. 2 hours. 50% of overall grade.
- Coursework. Project based learning which is focused on a theme set by AQA. Begins in Summer term of Year 10. 50% of overall grade.

Post-16 Options:

Highdown offers Art and Design at A Level. Students require a Grade 4+ in an Art subject. Portfolio work will be considered.

Degree Options:

- Product Design
- Industrial Design
- Graphic Design
- Textile Design
- Engineering

Apprenticeship & Career Options:

- Architect
- Ergonomist
- Automotive Engineer
- Furniture Designer
- Product Designer





Brief Course Description:

This exciting GCSE in Drama gives students the opportunity to explore the subject from a range of perspectives by devising their own, original work; by bringing to life the work of a playwright; as theatre reviewers, developing their own thoughts on what makes drama and theatre successful; and as creative artists building and bringing a character to life through exploration and rehearsal.

Assessment for these qualifications is by:

- Written Examination. 1hour 45mins. 40% of overall grade. Topics include Drama terminology, study of a set play (Blood Brothers) and Live Theatre.
- NEA on Devising Drama and Texts in practice. Students create a devised performance in groups and perform an extract from a play. Assessed by external moderator. 60% of overall grade.

Post-16 Options:

Highdown offers A Level Drama. Students will need a 4+ in Drama GCSE and a 5+ in English Language or Literature.

Degree Options:

- Drama
- Musical Theatre
- Stage Management
- Theatre Practice

Apprenticeship & Career Options:

- Acting
- PR
- Stage Management
- Teaching
- Directing
- Film and TV
- Journalism
- Project/Events Management

Qualification Level:

GCSE

Examination Board:

AQA

Syllabus Reference:

8261

Contacts for further information: Mrs S Lake (Curriculum Leader)

hsm@highdown.reading.sch.uk



**Qualification Level:**

GCSE

Examination Board:

AQA

Syllabus Reference:

8136

Contacts for further information: Mr H Hutchinson (Subject Lead)

mihutchinson@highdown.reading.sch.uk

Brief Course Description:

Few subjects are as dynamic as Economics, with the news full of examples of economic principles learnt in the classroom operating in the real world. Through the study of how markets and economies work at both national and global levels you will see how current and historical events can be understood from an economic standpoint. That understanding and the use of economic arguments will empower you to make informed decisions as active participants in society throughout your life.

Assessment for these qualifications is by:

100% examination

- Paper 1: How markets work. 1 hour 45 minutes. 50% of GCSE
- Paper 2: How the economy works. 1 hour 45 minutes. 50% of GCSE

Post-16 Options:

Economics A Level is offered at Highdown. Students must get a Level 5 or more in both English and Mathematics GCSE. Economics A Level is complementary to other subjects such as Mathematics, Geography, Politics and Business.

Degree Options:

- | | |
|---------------------------|--|
| • Economics | • PPE (Philosophy, Politics and Economics) |
| • International Relations | • Politics |
| • Economics | • Finance |
| • History | |
| • Mathematics | |

Apprenticeship & Career Options:

- | | |
|------------------------|----------------------|
| • Stockbroker | • Manager |
| • Actuary | • Entrepreneur |
| • Business Analyst | • Investment Manager |
| • Economist | • Accountant |
| • Business Development | • Banker |



FOOD PREPARATION AND NUTRITION



Qualification Level:

GCSE

Examination Board:

EDUQAS

Syllabus Reference:

C560P1

Contacts for further information:

Ms C Lobo
(Curriculum Leader)
hcl@highdown.reading.sch.uk

Brief Course Description:

Food Preparation and Nutrition gives students the knowledge, understanding and skills required to cook and apply the principles of food science, nutrition and healthy eating. It encourages students to cook, enables them to make informed decisions about food and nutrition and allows them to acquire knowledge in order to be able to feed themselves and others affordably and nutritiously, now and later in life.

Assessment for these qualifications is by:

Written Examination. Theoretical knowledge of food preparation and nutrition. 1 hour 45mins. 50% of overall grade.

Two NEA assignments set by EDUQAS. Focuses are Food Science Investigation (15%) and Food Preparation Assessment (35%). All assessments take place in Year 11.

Post-16 Options:

Highdown offers studies in related subjects at A Level. A Level Biology, Sociology and Sport all include aspects of Food Preparation and Nutrition.

Degree Options:

- Food Science
- Food Engineering
- Food and Nutrition
- Food Catering
- Culinary Studies

Apprenticeship & Career Options:

- Agricultural Engineer
- Food Scientist
- Baker
- Nutritional Therapist
- Butcher
- Food Writer
- Catering Manager
- Chef
- Farmer



**Qualification Level:**

GCSE

Examination Board:

AQA

Syllabus Reference:

8035

Contacts for further information: Mrs R Eaton (Curriculum Leader)

hrd@highdown.reading.sch.uk

Brief Course Description:

By opting for Geography, you are showing an interest in the world in which we live. There is a strong emphasis on you as a global citizen, decision making and sustainability. The course is engaging and relevant to today's geographers – a qualification that enables students to explore the world, the issues it faces and their own place in it, and to help prepare them to succeed in their chosen pathway.

All students choosing GCSE Geography are required to undertake two field work investigations, one human and one physical. Students will complete a river study and look into counter-urbanisation in the London rural-urban fringe commuter belt.

The cost of these investigations is estimated to be £70 for the two trips, Human and Physical. Please contact Mrs Eaton if this cost might impact your decision to choose Geography GCSE.

Assessment for these qualifications is by:

Paper 1 Living with the physical environment - 1 hour 30 – 35% of overall grade

Paper 2 Challenges in the human environment - 1 hour 30 – 35% of overall grade

Paper 3 Geographical Applications - 1 hour 30 (includes Issue Evaluation with pre - released resources & two compulsory field work investigations) - 30% of overall grade

Post-16 Options:

Highdown offers A Level Geography. Students wishing to take it must have a Grade 4+ in Geography and 5+ in English Lit or Lang. Alternatively, students can have a Grade 6+ in Geography and Grade 4+ in English Lit or Lang.

Degree Options:

- Geography
- Oceanography
- Human Geography
- Physical Geography

Apprenticeship & Career Options:

- Climate Scientist
- Ecologist
- Land Surveyor
- Teacher





Qualification Level:

Level 1/2 Technical Award

Examination Board:

VTCT

Syllabus Reference:

CO2A5

Contacts for further information:

Ms C Lobo
(Curriculum Leader)
hcl@highdown.reading.sch.uk

This course is open for all students, although places will be prioritised for students following the Technical Programme.

Brief Course Description:

This qualification is designed to use the context of hairdressing and beauty therapy as a vehicle to support learners to develop broad and comprehensive understanding of the sector and related industries but, more importantly, of core academic knowledge and study skills that will support progression into post-16 and higher education. Specifically, the qualification will prepare learners to progress onto qualifications related to the hair and beauty sector, such as the T Level in Hair, Beauty and Aesthetics; however, learners may also progress onto broader areas of study. It is a vocational qualification equivalent to GCSE grades 9-1. The content of the qualification is designed to engage learners through the context of hair and beauty due to its popularity and aspirational career pathways.

This qualification consists of three mandatory units.

- UCO90 – Business and entrepreneurship in the hair and beauty sector
- UCO91 – Anatomy, physiology and cosmetic science
- UCO92 – Design in the hair and beauty sector

Assessment for these qualifications is by:

- Written Examination. 1 hour 40 mins. 40% of overall grade. This exam will focus on UCO90 and UCO91.
- NEA which is set by VTCT. Approximately 20 hours of work. 60% of overall grade.

Post-16 Options:

Highdown offers studies in related subjects at A Level. A Level Art and Design or Business.

Degree Options:

- | | |
|---------------|-----------------------------|
| • Hairdresser | • Hair and Beauty therapist |
| • Barber | |

Apprenticeship & Career Options:

- | | |
|-------------------------------|--------------------|
| • Hair and Make Up for Screen | • Media Makeup |
| | • Beauty Promotion |



**Qualification Level:**

GCSE

Examination Board:

OCR

Syllabus Reference:

1HI0/27: Superpower Relations and Tudor Depth Study

1HI0/11: Medicine in Britain

1HI0/31: Weimar and Nazi Germany

Contacts for further information:Ms A Duncan
(Curriculum Leader)alduncan@highdown.reading.sch.uk**Brief Course Description:**

This is an exciting and varied course that provides students with an excellent understanding of the events that have shaped our country and world from the medieval period to the present day. This ranges from medieval medicine and Elizabethan exploration to the rise of Hitler in Germany and the nuclear arms race in the second half of the twentieth century. The study of History helps students to develop critical thinking skills as well as high levels of analysis and evaluation which are wanted by all employers and academic courses. If you want to better understand the world around you and make sense of who and where we are, GCSE History is for you!

Assessment for these qualifications is by: 100% Examination

Three written papers

- Superpower Relations and Tudor Depth Study: 1hour 45 minutes
- Weimar and Nazi Germany: 1hour 20 minutes
- Medicine in Britain: 1hour 15 minutes

Post-16 Options:

History A Level is offered at Highdown. Students must get a grade 4 in History (with grade 5 in either English) or a grade 6 in History (with a grade 4 in either English). GCSE History is also a great subject to enable you to access a range of A Level subjects.

Degree Options:

- History
- Journalism
- Media
- Politics
- Marketing
- Archaeology
- Law
- Classics
- Business

Apprenticeship & Career Options:

- Civil Service
- Solicitor
- Journalist
- Public Service
- Antique dealer
- Archivist
- Art gallery curator



**Qualification Level:**

GCSE

Examination Board:

AQA

Syllabus Reference:

8652: New spec

Contacts for further information:

Mr B Fasham

befasham@highdown.reading.sch.uk

Ms W Huang (Interim Curriculum Leader)

wehuang@highdown.reading.sch.uk

Students may only opt to study a language that they have previously studied at Key Stage 3.

Brief Course Description:

French companies work in the Thames Valley and seek French speakers, while employers and Universities increasingly demand a foreign language qualification. There are over 300 million French speakers globally; it is one of the three primary working languages of the European Union. The proximity of France with its rich culture enables students to experience life and travel in France. The aim of the course is to enable students to develop:

An understanding of French in a variety of contexts.
Knowledge of French vocabulary and structures.
Transferable language learning skills.
The ability to communicate effectively in French.
Knowledge of the rich culture of France.

Assessment for these qualifications is by: Foundation:

Listening exam: 35 minutes. 25% of GCSE

Speaking (NEA): 7-9 minutes + 15 minutes prep time. 25% of GCSE

Reading exam: 45 minutes. 25% of GCSE

Writing exam: 1 hour 10 minutes. 25% of GCSE

Higher:

Listening exam: 45 minutes. 25% of GCSE

Speaking (NEA): 10-12 minutes + 15 minutes prep time. 25% of GCSE

Reading exam: 1 hour. 25% of GCSE

Writing exam: 1 hour 15 minutes. 25% of GCSE

Post-16 Options:

A Level French is offered at Highdown. Students must get a Grade 5+ in GCSE French (Higher).

Degree Options:

- French
- French Studies
- Translation
- Linguistics

Apprenticeship & Career Options:

- Airline Pilot
- Teacher
- Journalist
- Translator
- Immigration Officer
- Cyber Security



**Qualification Level:**

GCSE

Examination Board:

EDEXCEL

Syllabus Reference:

Mandarin 1CN0

Contacts for further information:

Ms W Huang (Interim Curriculum Leader)

wehuang@highdown.reading.sch.uk

Students may only opt to study a language that they have previously studied at Key Stage 3.

Students on the Mandarin Excellence Programme must take GCSE Mandarin

Brief Course Description:

Over 1.3 billion people speak Mandarin including people in China, Singapore and Taiwan. China is a huge economic power and it is vital to be equipped for the future. Mandarin is a completely different language with its rich culture and the grammar is relatively easy to learn.

The aim of the course is to enable students to develop:

- An understanding of Chinese in a variety of contexts.
- Knowledge of Chinese vocabulary and structures.
- Transferable language learning skills.
- The ability to communicate effectively in Chinese.
- The awareness and understanding of countries and communities where Chinese is spoken.

Assessment for these qualifications is by:**Foundation:**

Listening exam: 35 minutes. 25% of GCSE

Speaking (NEA): 7-9 minutes + 15 minutes prep time. 25% of GCSE

Reading exam: 45 minutes. 25% of GCSE

Writing exam: 1 hour 10 minutes. 25% of GCSE

Higher:

Listening exam: 45 minutes. 25% of GCSE

Speaking (NEA): 10-12 minutes + 15 minutes prep time. 25% of GCSE

Reading exam: 1 hour. 25% of GCSE

Writing exam: 1 hour 15 minutes. 25% of GCSE

Post-16 Options:

A Level Mandarin is offered at Highdown. Students must get a Grade 5+ in GCSE Mandarin (Higher).

Degree Options:

- | | |
|---------------|-------------------|
| • Mandarin | • Chinese Studies |
| • Translation | • Linguistics |

Apprenticeship & Career Options:

- | | |
|-----------------------|------------------|
| • Airline Pilot | • Teacher |
| • Journalist | • Translator |
| • Immigration Officer | • Cyber Security |



**Qualification Level:**

GCSE

Examination Board:

AQA

Syllabus Reference:

8692: New spec

Contacts for further information:

Mr B Fasham

befasham@highdown.reading.sch.uk

Ms W Huang(Interim Curriculum Leader)

wehuang@highdown.reading.sch.uk

Students may only opt to study a language that they have previously studied at Key Stage 3.

Brief Course Description:

There are 430 million Spanish speakers worldwide and Spain is one of the UK's major trading partners. The value of trade between Spain and the UK is about £21 billion per year. In addition, Spain is the most likely country to be visited by UK tourists. The aim of the course is to enable students to develop:

- An understanding of Spanish in a variety of contexts
- Knowledge of the Spanish vocabulary and structures
- Transferable language learning skills.
- The ability to communicate effectively in Spanish.
- The main themes studied are:
- People and lifestyle
- Popular culture
- Communication and the world around us

Assessment for these qualifications is by: Foundation:

Listening exam: 35 minutes. 25% of GCSE
Speaking (NEA): 7-9 minutes + 15 minutes prep time. 25% of GCSE

Reading exam: 45 minutes. 25% of GCSE

Writing exam: 1 hour 10 minutes. 25% of GCSE

Higher:

Listening exam: 45 minutes. 25% of GCSE
Speaking (NEA): 10-12 minutes + 15 minutes prep time. 25% of GCSE

Reading exam: 1 hour. 25% of GCSE

Writing exam: 1 hour 15 minutes. 25% of GCSE

Post-16 Options:

A Level Spanish is offered at Highdown. Students must get a Grade 5+ in GCSE Spanish (Higher).

Degree Options:

- | | |
|---------------|-------------------|
| • Spanish | • Spanish Studies |
| • Translation | • Linguistics |

Apprenticeship & Career Options:

- | | |
|-----------------------|------------------|
| • Airline Pilot | • Teacher |
| • Journalist | • Translator |
| • Immigration Officer | • Cyber Security |



**Qualification Level:**

GCSE

Examination Board:

OCR

Syllabus Reference:

J536

Contacts for further information: Mr H Santer (Subject Leader)

hhs@highdown.reading.sch.uk

Students may only opt to study a either Music or Music Technology cannot take both.

Brief Course Description:

You should choose Music if you meet at least four of the following criteria: -

- You have enjoyed Music at Key Stage 3.
- You play an instrument and/or sing.
- You can read music.
- You enjoy performing and composing.
- You enjoy working with computers.
- You want to study A Level Music or Music Technology.

What will I study?

The course is split into three main areas – Performing, Composing, and Listening and Appraising.

Performing: You will take part in solo and ensemble performances throughout the course.

Composing: You will have many opportunities to create your own composition work in a variety of musical styles.

Listening and Appraising: You will study a wide range of different music, from Classical and Jazz to Pop and Rock.

Assessment for these qualifications is by:

- Written Paper. Series of questions based on Listening and Appraising. 1hour 30mins. 40% of overall grade.
- Performance. Two performances, one of which must be part of an ensemble. 30% of overall grade.
- Composing. Two composed pieces, one of which is directed by OCR. 30% of overall grade.

Post-16 Options:

Highdown offers A Level Music and Music Technology. Students must achieve a Grade 5+ in Music GCSE.

Degree Options:

- | | |
|------------------------------|--------------------|
| • Music | • Film Music |
| • Music and Music Technology | • Music Production |
| | • Creative Music |

Apprenticeship & Career Options:

- | | |
|------------------|--------------------|
| • Music teaching | • Recording Artist |
| • Sound Artist | • Advertising |





Students may only opt to study a either Music or Music Technology cannot take both.

Brief Course Description:

You should choose Music Technology if you meet at least four of the following criteria: -

- You enjoy creating your own music tracks.
- You have enjoyed Music at Key Stage 3.
- You want to make CD/MP3 recordings.
- You enjoy working with computers.
- You want to study A Level Music Technology.

Assessment for these qualifications is by:

Written Paper. Series of questions based on Listening and Appraising. 1hour 30mins. 40% of overall grade.

Performance. Two performances, one of which must be part of an ensemble. 30% of overall grade.

Composing. Two composed pieces, one of which is directed by OCR. 30% of overall grade.

Post-16 Options:

Highdown offers A Levels in Music and Music Technology. Students must get a Grade 4+ in either GCSE Music or Music Technology. Students' musical ability can be reviewed if GCSE not studied.

Degree Options:

- | | |
|------------------------------|--------------------|
| • Music | • Film Music |
| • Music and Music Technology | • Music Production |
| | • Creative Music |

Apprenticeship & Career Options:

- | | |
|--------------------|-----------------------|
| • Music teaching | • Advertising |
| • Sound Artist | • Music Management |
| • Recording Artist | • Multimedia Designer |

Qualification Level:

GCSE

Examination Board:

OCR

Syllabus Reference:

J536

Contacts for further information: Mr H Santer (Subject Leader)

hhs@highdown.reading.sch.uk





Qualification Level:

GCSE

Examination Board:

EDEXCEL

Syllabus Reference:

1PE0

Contacts for further information: Dr T Browne (Curriculum Leader)

thbrowne@highdown.n.reading.sch.uk

Brief Course Description:

Sport is a global, multi billion pound industry and therefore has many exciting career opportunities. Studying GCSE Physical Education is the first building block to following pathways in performing, coaching, teaching, physiotherapy, sports rehabilitation, medicine, officiating, sports technology development, sports administration, sports psychology, sports management and media. You will study GCSE Physical Education if you regularly enjoy competitive sport and have a thirst for exploring the theory behind improving performance as well as the benefits to health regular participation can bring.

Assessment for these qualifications is by:

- Written Examination – Fitness and Body Systems (1hour 30mins), and Health and Performance (1hour 15mins). 60% of overall grade.
- NEA Coursework. Students plan and evaluate a 6 week training programme. 10% of overall grade.
- Practical performance. Externally moderated. Students must perform in one individual and one team sport.

Post-16 Options:

Highdown offers a range of subjects suitable for study after PE GCSE. Sport Level 3 BTEC – students will need a 4+ in Biology or 4-4 in Trilogy Science.

Degree Options:

- | | |
|----------------------|---------------------|
| • Sport Coaching | • Teaching |
| • Sport and Exercise | • Sports and |
| • Sport | Exercise Therapy |
| Management | • Sports Psychology |

Apprenticeship & Career Options:

- | | |
|-------------------|--------------|
| • Health Trainer | • Sports |
| • Physiotherapist | Development |
| • Sports Coach | Officer |
| | • Sports |
| | Professional |



**Brief Course Description:**

This GCSE course is an opportunity to develop your knowledge and understanding of some of the most important moral and social issues in our world. Learning of and from different faiths and worldviews, it will cause you to think more about the different views people have on multiple issues and help you develop your own beliefs and ethical viewpoints. You will need to use your thinking skills, personal skills and your ability to listen and learn from other cultures to be successful.

Assessment for these qualifications is by:
100% written examination

- Two examinations – Both written exams: 1 hour 45 minutes
- Each exam is 50% of GCSE

Post-16 Options:

Highdown offers A Levels in related subjects such as Religious Studies, Politics, and Sociology. Students must get 4+ in either English GCSEs to be eligible.

Degree Options:

- Religious Studies
- Theology
- Religious
- Literature
- Sociology

Apprenticeship & Career Options:

- Aid Worker
- Teacher
- Editor Assistant
- Religious Leader
- Paralegal
- Legal executive
- Solicitor

Qualification Level:

GCSE

Examination Board:

AQA

Syllabus Reference:

8062

Contacts for further information: Mr M

Hampson

mihampson@highdown.reading.sch.uk



**Qualification Level:**

Level 1/2 Cambridge
National Award

Examination Board:

OCR

Syllabus Reference:

J829

**Contacts for further
information:** Dr T
Browne (Curriculum
Leader)

[thbrowne@highdow
n.reading.sch.uk](mailto:thbrowne@highdow
n.reading.sch.uk)

***This course is only open for students
following the Technical Study Programme.***

Brief Course Description:

Level 2 Sports Studies is an excellent starting point for learners wishing to develop knowledge and skills of the sports sector. Sports Studies will cultivate a core of knowledge and understanding as well as apply that knowledge in preparing, planning and developing a health and fitness programme and training sessions.

What will I study?

Contemporary issues in sports.

This will include theory on what motivates people to take part in sport, the barriers to participation, and the importance of role models and world sporting events. Students will also investigate the significant role sport has in promoting values and fair play. Developing sports skills.

Students will have the opportunity to take part in a range of sports in four roles. These roles are: The team performer, the individual performer, the coach and the official.

Sports Leadership.

Students will explore different leadership styles and knowledge of how to plan effective sports sessions. As the course progresses students will lead sessions and evaluate success.

Sport and the media.

Assessment for these qualifications is by:

- Written Examination – Contemporary Issues in Sport. 1hour 15mins.
- NEA Coursework – Performance and Leadership in Sports, and Sport and the Media.

Post-16 Options:

Highdown offers a range of subjects suitable for study after PE GCSE. Sport Level 3 BTEC – students will need a 4+ in Biology or 4-4 in Trilogy Science.

Degree Options:

- Sport Coaching
- Sport and Exercise Therapy
- Sports Psychology

Apprenticeship & Career Options:

- Health Trainer
- Sports Development Officer
- Physiotherapist





Brief Course Description:

In a world swimming with data, an understanding of how that data is collected, used and interpreted is vital in empowering you to make informed decisions in both your private and professional lives in the future. Not only will you learn how to perform your own statistical investigations collecting and interpreting real world data yourself, you will also develop the tools and understanding to critique the statistics put forward by others. Data is one of our most valuable commodities – can you afford not to understand it?

Assessment for these qualifications is by:

100% written examination.

Entries are tiered as either Foundation (Grades 1-5) or Higher (Grades 4-9).

- Paper 1. 1 hour 45 minutes. 50% of GCSE
- Paper 2. 1 hour 45 minutes. 50% of GCSE

Post-16 Options:

- Mathematics A Level is available to students who obtain a Grade 7+ in their Mathematics GCSE.
- Further Mathematics A Level is available to students who obtain a Grade 8 or higher in their Mathematics GCSE (must be taken alongside Mathematics A Level).
- Mathematical Studies (Core Maths) is available to students who obtain a Level 4+ in their Mathematics GCSE/ -
- Statistics GCSE would also be useful for anyone interested in Psychology at Sixth Form as this contains a lot of statistics.

Degree Options:

- Statistics
- Mathematics
- Finance
- Actuarial Science

Apprenticeship & Career Options:

- Statistician
- Sports Statistician
- Research Scientist
- Software Developer

Qualification Level:

GCSE

Examination Board:

AQA

Syllabus Reference:

8382

Contacts for further information: Mr H Hutchinson (Subject Lead)

mihutchinson@highdowen.reading.sch.uk

